

e

THE PARALANIAN

Introducing

- 1) A new conception of the "Art of Living".
- 2) A luxurious home, as mobile as your car.
- 3) The perpetual answer to your holiday problem.
- 4) The Civil Engineer's dream.
- 5) The Commercial Traveller's solution of the hotel nightmare.
- 6) The "Ideal" for foreign touring.
- 7) A "Must" for all who would widen their outlook.

Built on the famous Austin "152" Chassis with the full approval of the Austin Motor Co., Ltd.

Solely by

CENTRAL GARAGE Ltd.

PARRY LANE

BRADFORD Yorks

Telephone: Bradford 28475



OF PLEASING LINES

YET NO LONGER THAN AN ORDINARY CAR

When "Austin" brought out the "152" Model, it was promptly hailed as a thoroughly dependable, economical and practical vehicle, and you need only count them on the road to verify.

Building, therefore, on this sound basis, we now offer you a high class FLAT, with *all* the amenities, but possessing the mobility and handiness of a private motor car.

It is fitted and furnished in good taste and an inviting manner, with ample head room and floor space and stowage for *all* your goods and chattels.

Cool in summer, warm in winter, homely and friendly, we commend it to you for gay adventure, in every off-duty moment.

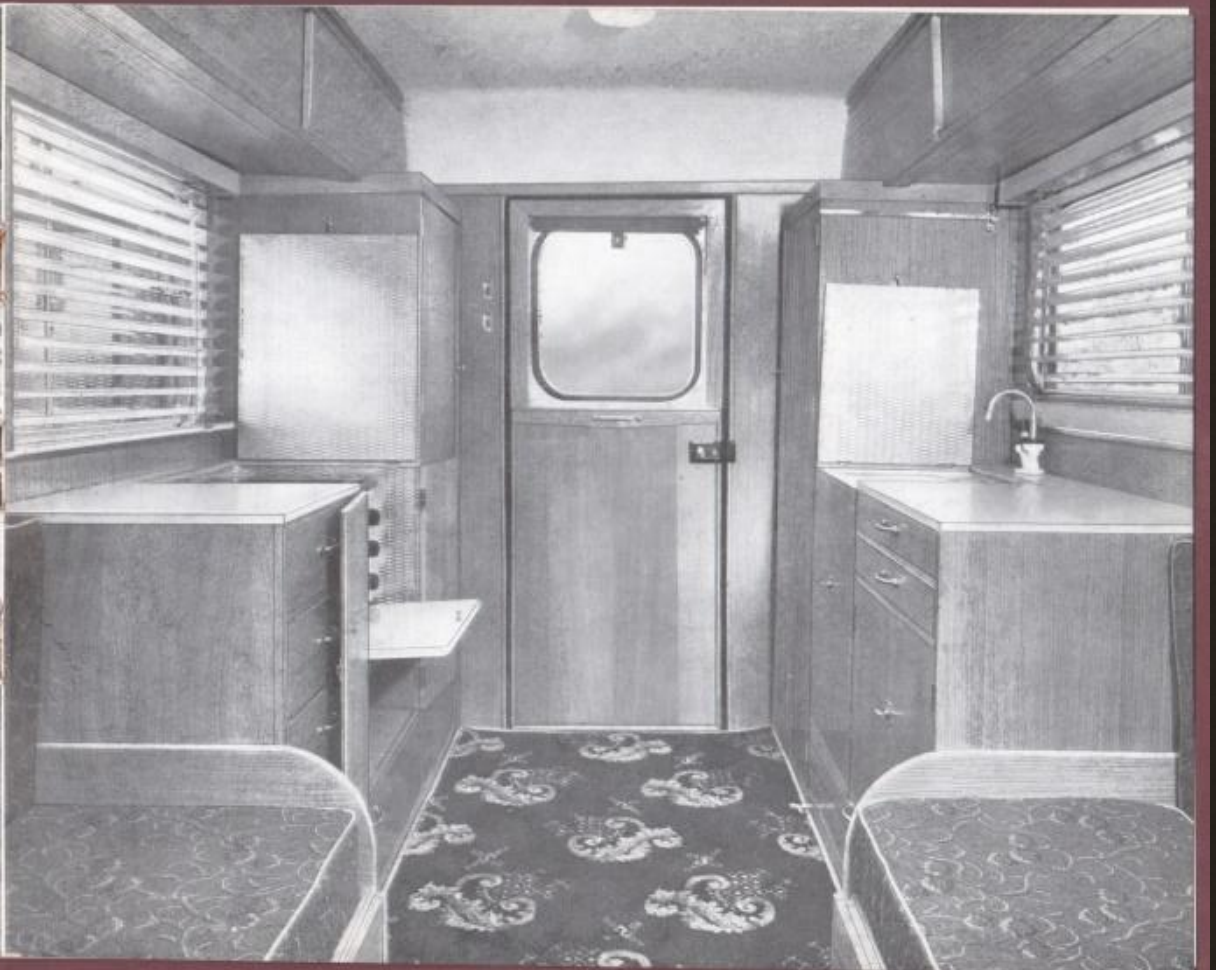
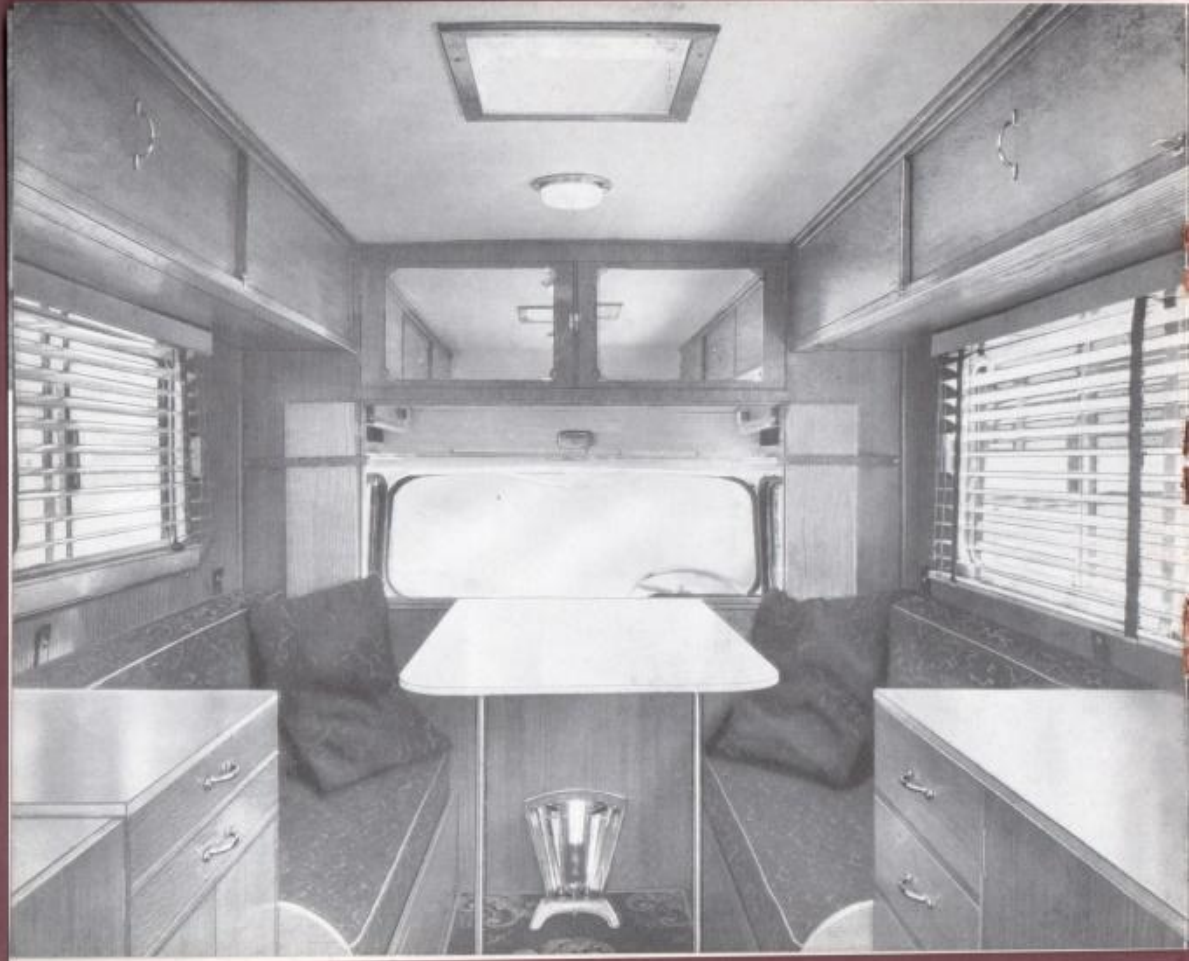
STILL ELEGANT

EVEN WHEN VIEWED FROM THE REAR



AND ALL THESE POINTS TOO:—

- 1) Pays no Purchase Tax.
- 2) Licensed as a private motor car.
- 3) Economical; will run as cheaply as a car and maintain a high cruising speed.
- 4) Can be parked anywhere and will enhance the scene.
- 5) Cooking facilities to please the most extravagant chef.
- 6) Superb seating accommodation for seven persons when travelling.
- 7) Excellent visibility.
- 8) Cuts household drudgery.
- 9) If you own a Rolls, you'll be proud of this, too.
- 10) Rides and handles with perfect ease.
- 11) Charming concentration of complete and carefree comfort.



SPECIFICATION

Chassis: Austin "152", 15 cwt., 7 ft. 6 in. wheel base.

Engine: B.M.C. 4 cylinder, 1½ litre (B Series).

Body: Built on substantial reinforced ash frame. Double skinned. Exterior panelling of metal and plastic. Interior fully lined in polished veneer finish. Hand-made furniture to match, comprising: Wardrobe, cupboards, drawers, lockers, mirrors, cooker/sink unit, detachable table, two Dunlopillo settees upholstered in first quality material. Full length sliding windows. Perspex roof light. Ventilators. Floor covered linoleum. All round curtains to tone.

Accommodation: Sleeping for two persons on thick Dunlopillo bunks. (Sleeping for four persons at extra charge.)

Cooking: By Calor Gas.

Washing: Washbowl with water laid on from 12 gallon tank. Formica tops to provide working area.

Lighting: Electric, from batteries.

Driving Compartment: Separate from accommodation. Special seating forming emergency bunks at night. Upholstered as interior.

Dimensions: Overall length 14 ft. 3 in.
Overall width 6 ft. 3½ in.
Overall height 8 ft. 4 in.
Interior length 9 ft. 0 in.
Interior width 6 ft. 0 in.
Interior height 5 ft. 11 in.
Weight approx. 32 cwt.

Finish: In the highest tradition of craftsmanship. First class Durable coach finish in pastel shades with all matching interior trim.

PRICE: STANDARD MODEL £1,050 (Ex Works)

FULL DE-LUXE MODEL

INCORPORATING THE FOLLOWING EXTRAS

- 1) Chrome on brass window units.
- 2) Rimebellishers.
- 3) Chromium flashings on side panels.
- 4) Two-tone exterior colour scheme.
- 5) Cab heater.
- 6) Heavy duty battery.
- 7) Waste water tank.
- 8) Fully insulated.
- 9) Venetian blinds.
- 10) Wall lights.
- 11) Cold storage locker.
- 12) Axminster fitted carpet.
- 13) First quality Moquette upholstery.
- 14) Oven incorporated in cooker.
- 15) Convector gas fire.
- 16) Chemical toilet compartment.
- 17) Folding bulkhead behind driver.
- 18) Superior finish.

PRICE: £1,250 (Ex Works)

CENTRAL GARAGE Ltd.

PARRY LANE

BRADFORD

YORKS

Telephone: Bradford 28475

AUSTIN DISTRIBUTORS

Printed by
WATMOUGHS LIMITED
Idle, Bradford; and London