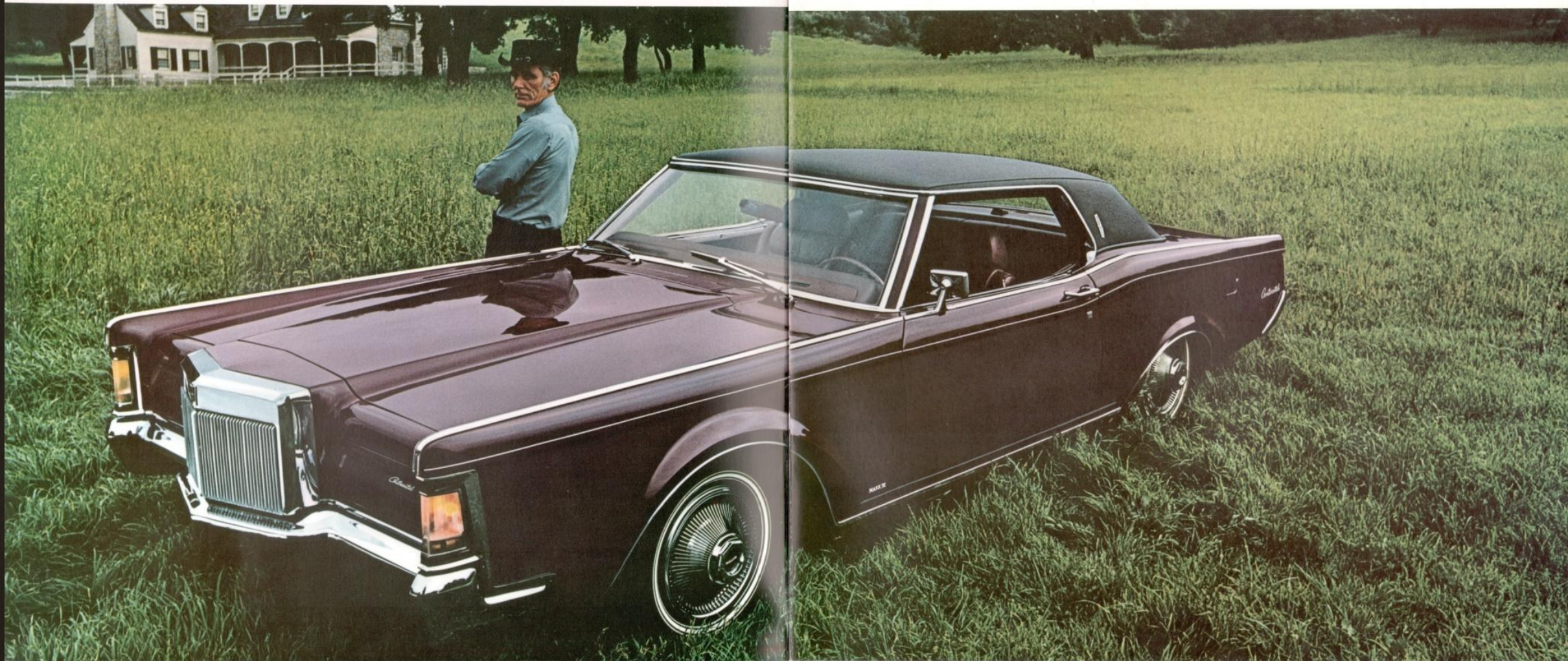


A black and white photograph of a Lincoln Continental wheel hubcap. The hubcap is highly reflective, showing concentric circular patterns and a bright light source from the right. In the center of the hubcap is the Lincoln logo, a four-pointed star with a rectangular center. The text "Lincoln Continental." and "Continental Mark III." is printed in a white, serif font in the upper left quadrant of the hubcap.

Lincoln Continental.  
Continental Mark III.

1969

Continental Mark III



The most authoritatively styled, decisively individual motor car of this generation.





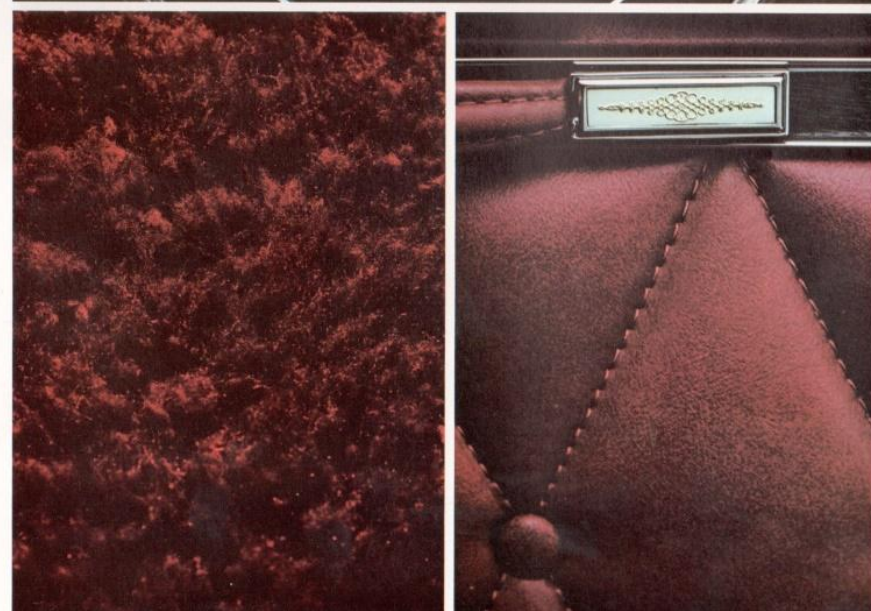
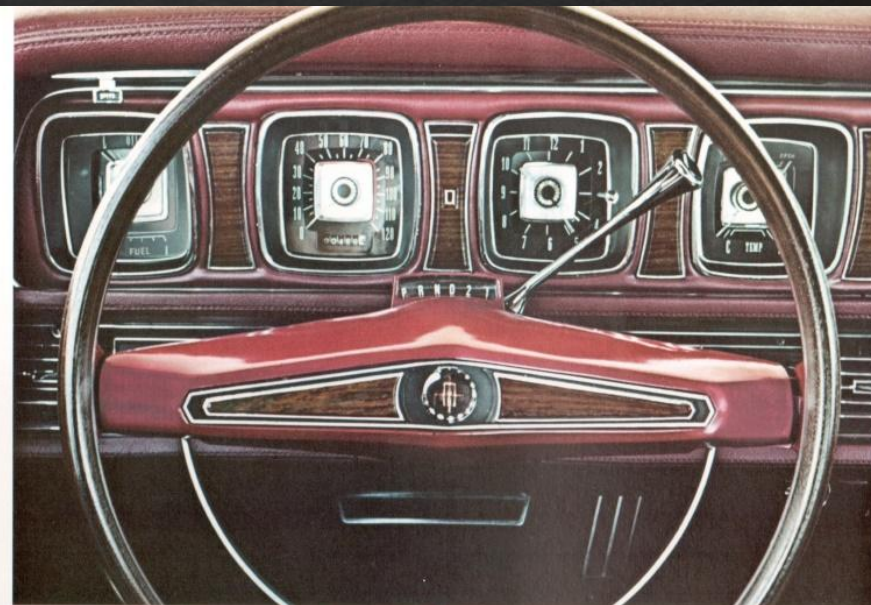
**Mark III Standard Equipment**  
365 horsepower, 460 CID V-8 engine  
—the most advanced V-8 in the industry,  
featuring the latest precision-engineered,  
lightweight, deep-breathing design □  
Select-Shift automatic transmission □ Power  
brakes □ Front disc brakes □ Power  
steering □ Power windows □ Power seat  
□ Concealed dual headlamps □ Dual  
exhausts □ Individually adjustable front  
seats □ Flow-Thru ventilation system  
□ Nylon carpeting □ Center folding  
armrests, front and rear □ Rear lamp  
monitoring system (tells you if your tail-  
lights, braking lights or turn signals are  
working) □ Plus, a host of other standard  
luxury items befitting a motor car of  
Mark III's stature, and all of the Ford Motor  
Company Lifeguard Design Safety Features  
such as dual brake system with warning  
light and 4-way emergency flasher.

**Interior Choices**  
Simulated East Indian Rosewood/English  
Oak woodgrain appliques on instrument  
panel, steering wheel and door panels, to  
blend with these upholstery schemes: In  
nylon fabric-and-vinyl—black, gray, blue,  
aqua, dark ivy or nugget gold. In optional  
leather-with-vinyl—black, red, gray, blue,  
aqua, white, saddle, dark ivy or nugget gold.

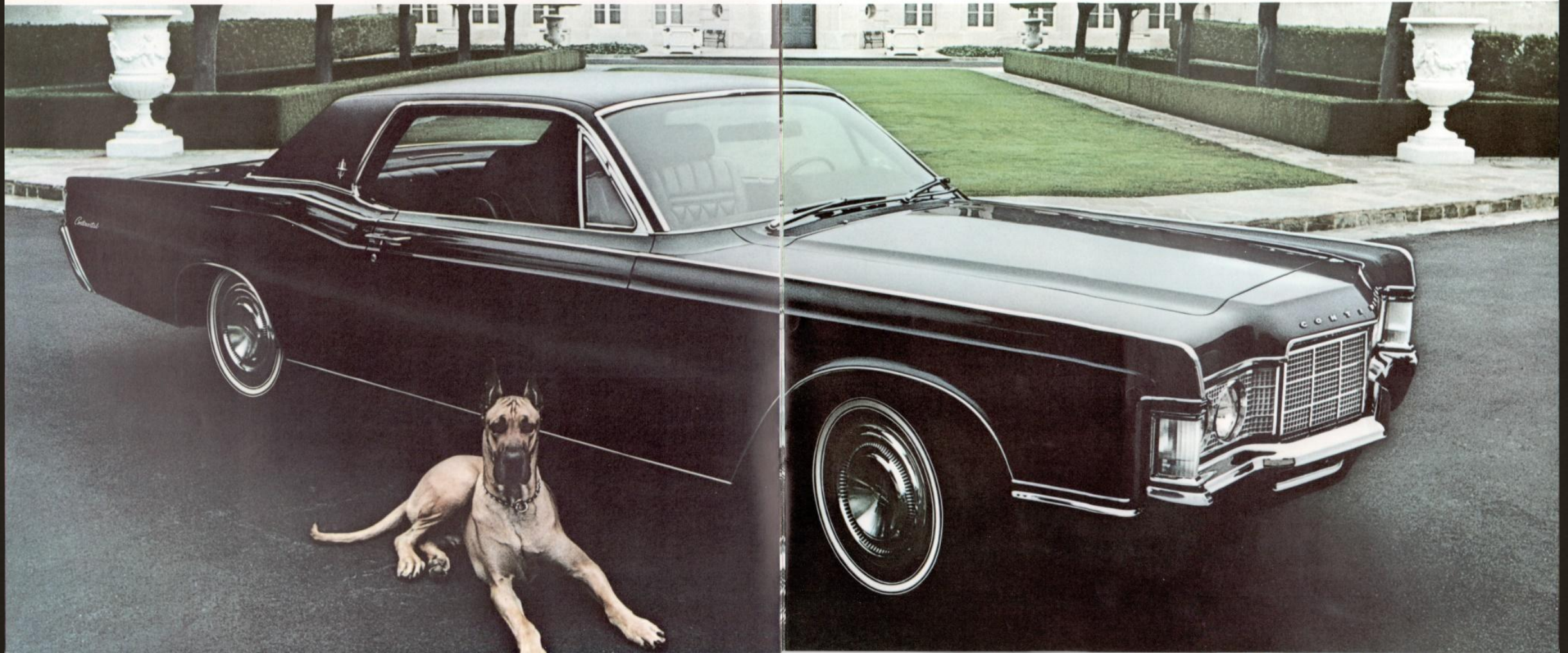
**Exterior Choices**  
Black, White, Dark Gray Metallic, Light  
Gray Metallic, Dark Orchid Metallic,  
Medium Orchid Metallic, Dark Blue Metallic,  
Medium Blue Metallic, Platinum, Dark  
Aqua Metallic, Medium Aqua Metallic,  
Dark Ivy Green Metallic, Light Green  
Metallic, Medium Lime Metallic, Medium  
Gold Metallic, Light Green, Light Gold,  
Yellow, Burnt Orange Metallic, Light Copper  
Metallic, Maroon.

**Additional Equipment**  
Automatic temperature control, tilt steering  
wheel, speed control, AM/FM radio with  
stereophonic sound, AM radio/Stereo-Sonic  
Tape System, vinyl roof, six-way power  
seat with reclining passenger seat, electric rear  
window defroster, as well as many other  
optional conveniences.

In order to continue to offer the finest  
automotive products available, Ford Motor  
Company reserves the right to change  
specifications without notice and without  
incurring any obligations. Accessories and  
other equipment that are not standard  
equipment are optional at extra cost. See  
your Lincoln Continental dealer for the latest  
product information concerning Mark III.



Lincoln Continental: America's Most Distinguished Coupé

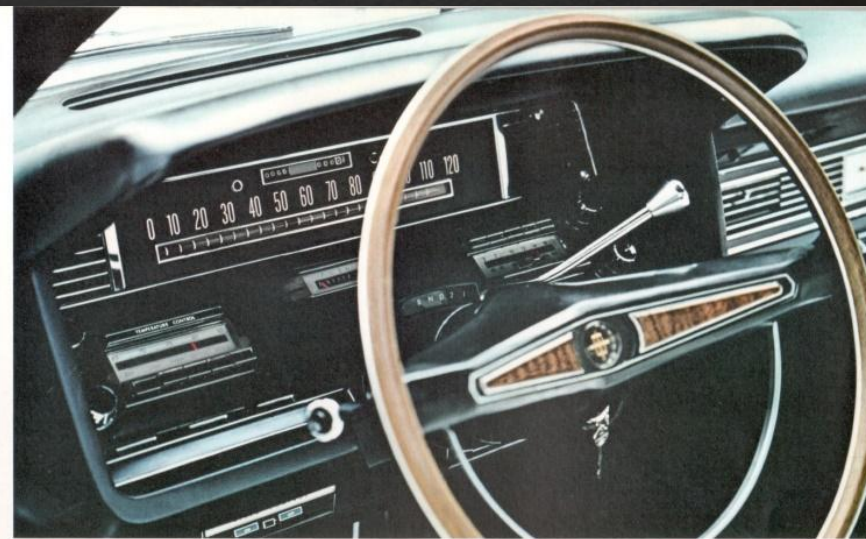




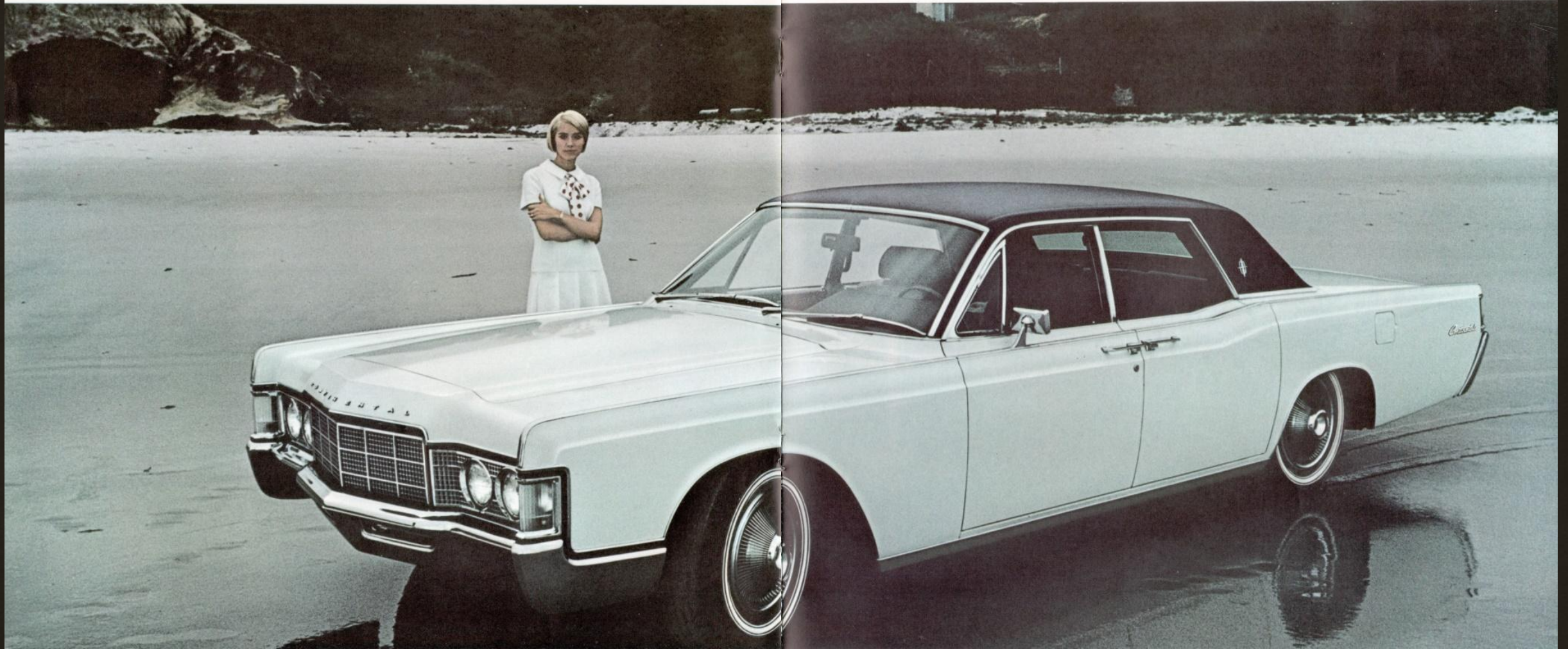
The interior (left) shows the sumptuousness of Continental's new Town Car ultra-luxury interior option. In addition to unique leather-and-vinyl seats and door panels the option includes special napped-nylon headlining, extra plush carpeting, and color-keyed instrument panel trim. Available in black, dark blue, dark ivy gold, light ivy gold and white.

A new simulated walnut-grain steering wheel with deep-padded, vinyl-covered spokes and hub graces the 1969 Continental interior (shown right). Windshield washers are of advanced design with dual stream outlets. Wipers feature an infinitely adjustable speed control.

The Continental luggage compartment (lower right), the largest in the luxury-car field, has 18 cubic feet of usable storage space and measures 67 inches across the trunk opening. Full carpeting for the luggage compartment is standard. A remote-control deck-lid release is available as an option. Also optional is a twelve-piece, Marvelon luggage set created by Guild Masters exclusively for Continental.



Lincoln Continental: America's Most Distinguished Sedan

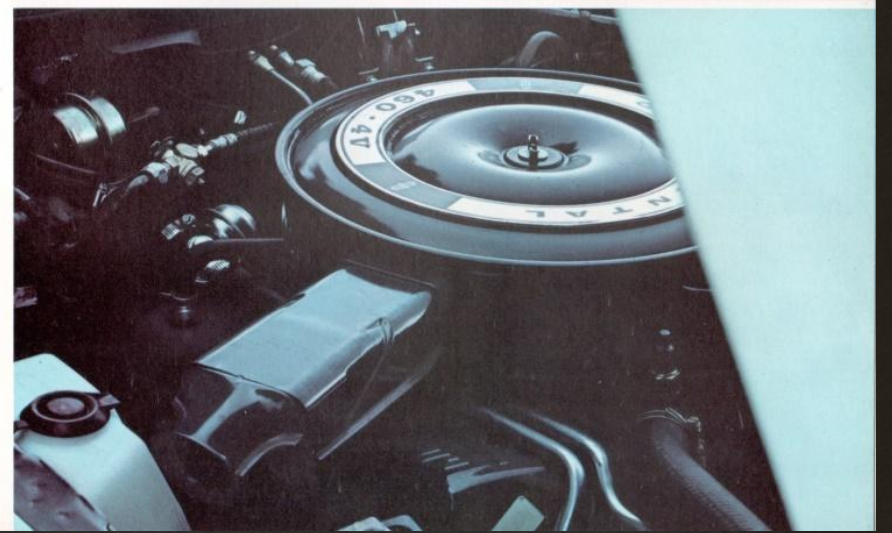
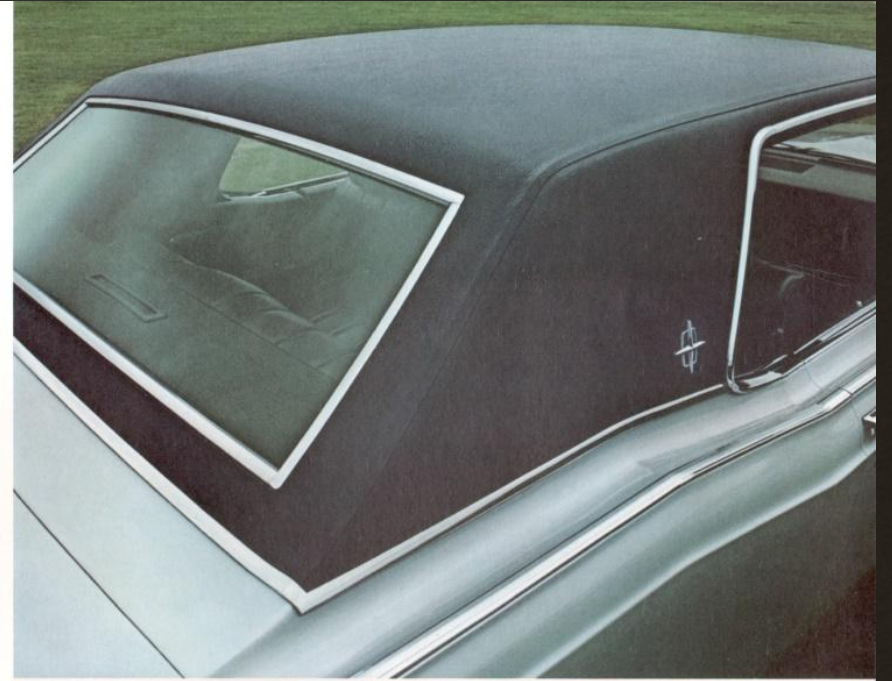




Individually adjustable front seats (shown left) with power controls are available for driver and passenger at optional cost. The passenger seat, with reclining back, is as near to a custom lounge as you will find in any automobile. With a touch of the controls, you move forward or back, up or down.

For people who prefer the subtle beauty of vinyl, this year's Continental offers an optional vinyl roof (shown right). Available in black, white or dark ivy gold.

Continental's computer-designed 460-cubic inch, 365 horsepower V-8 (lower right) is a completely new luxury-car engine incorporating the latest advancements in thin-wall V-8 design, precision manufacturing and space-age technology. The first engine to be designed from the drawing board up with exhaust emission control as an element of the original design.



## Lincoln Continental: America's Most Distinguished Limousine

The 1969 Lincoln Continental Executive Limousine is hand crafted by coachbuilders Lehmann-Peterson, and is available through your Continental dealer. It may be ordered in any one of 22 Continental colors. Notice the Continental-starred side panel to the rear of the

driver's door; it has been added to provide greater privacy for the rear compartment, particularly for those riding in the companion seats. Should you look inside the passenger compartment, the first thing you would notice is what's not there . . . jump seats. In their places are

permanently positioned rear-facing deep-padded companion seats, designed so that the seat cushions fold up out of the way, a la theatre seats. You can see how much extra room this makes when these seats are not in use. The built-in walnut cabinet is another unique

touch in this limousine. It is equipped with your choice of an AM radio/Stereo-Sonic Tape System combination or AM/FM radio. In addition to Continental options, you may order exclusive options ranging from a beverage service to a built-in television set.

