

Mid-size

'77 Chevelle

America's smart money car.



Chevrolet

**Has success
spoiled Chevelle?
Obviously
not this year.**

Very few cars in history have been able to generate the excitement Chevelle has over the years. It is a car possessed of that combination of style and road sense that sets things tingling deep inside those who love to drive. And the magic (as you can see below) is working again.

But we must remember that people who buy Chevelle and other cars its size do so for basic reasons, as well. Reasons like room, ride and comfort. To sum it all up, value.

Chevelle is, at once, a sensible balance of size and price, beauty and integrity, comfort and ride.

It is a beautiful car, not simply in the sense of having a pleasing design (which it abundantly has), but also in the sense of being beautifully functional. For example, it is a comfortable car for the highway, yet it is an agile size for city driving.

Chevelle is, as you will read in this catalog, a very complete car. One that we believe is now at a pinnacle of excellence.

And with the introduction in 1975 of standard radial tires, High Energy

Ignition, the catalytic converter and more, today's Chevilles feature a host of engineering advances and can go thousands of miles farther between scheduled service stops than did Chevilles of 1974 vintage.

Popularity is also a valid indicator of value, and Chevelle is the most popular mid-size in history. More than 4.8 million people have selected Chevelle since its introduction in 1964.

In nine of the last 13 years it clearly has been the mid-size sales leader.

Traditional high demand for used Chevilles is another testimony of the car's inherent value.

Plainly, Chevelle is right at the top in important categories for people who buy mid-size cars. And when an automobile looks this good and offers so much, it has to be a smart money car for those who demand value for what they spend.

You can verify that for yourself on the following pages.



Malibu Classic Coupe. Shown with available vinyl roof cover, remote-control outside mirror, white stripe tires, sport wheel covers, bumper guards and rub strips. Shown on cover, Malibu Classic Landau Coupe with available white stripe tires, full wheel covers, bumper rub strips, tinted glass and sport mirrors.

Many Options and Custom Features are available for Chevelle. Some are illustrated or described in this catalog. Copyright 1976, Chevrolet Motor Division, General Motors Corporation.

For those who demand value for what they have to spend, Chevelle is a smart money car.

Ride and maneuverability.

What has made Chevelle such an impressive value for all these years? Careful blending of so many good things. Take, for instance, its comfort, solid ride and good feel on the highway. Yet manipulate Chevelle into a parking spot and you'll appreciate its intermediate size that's neither too big nor too small.

Chassis and suspension.

Try Chevelle and we think you'll agree that it has both fine ride and a great feel on the road. A few of the features contributing to these characteristics are Full Coil suspension with springs computer selected to match each car's weight and available equipment, along with a front ride stabilizer, rugged perimeter-type frame and cushioned body mounting system.

Engineering geared to excellent operation.

With Chevelle you get engineering designed for excellent operation as well as clean air and quick starts. Included are High Energy Ignition for responsive ignition performance and a catalytic converter that handles most of the emissions control so engines can be tuned for good overall performance.

Long maintenance intervals.

Economy of operation is one of Chevelle's strong points, typified by long service intervals. It's recommended, for instance, that engine oil changes and chassis lubrications be made every six months or 7,500 miles. And oil filters should be changed after the first 7,500 miles and every 15,000 miles thereafter. Spark plugs should last for up to 22,500 miles and automatic transmission fluid for 60,000 miles. For complete details, see Owner's Manual.

As tough as it is beautiful.

For a smart money car like Chevelle, being beautiful isn't enough. Under the hood and elsewhere are features that add to the car's dependable operation.

Radial ply tires (fiberglass belted for 6-cylinder models, steel-belted required for V8 models) offer low rolling resistance and impressive traction in snow and on wet roads. Front disc brakes resist fading and are self-adjusting. Finned rear brake drums help brakes dissipate heat and also are self-adjusting. Audible wear sensors sound when front disc linings need replacing.

Look forward, too, to the available Turbo Hydra-matic transmission (standard on Malibu Classic Sedan) that automatically shifts for you.

Standard with the six-cylinder engine is the fully synchronized 3-Speed manual transmission. See Power Team chart for details.

And expect even more. Protective inner fenders, front and rear, help fight rust. The coolant recovery system helps prevent costly coolant loss. You also get a Delcotron generator with built-in solid-state regulator, plus a sealed side-terminal battery that eliminates buildup of corrosion on terminals. Ball joint wear indicators are located on the front suspension lower control arms. And there's also a 22-gallon fuel tank.

Acrylic finish.

Known for its lustrous finish, Chevelle's Magic-Mirror acrylic finish comes in a choice of 14 exterior colors. Check your favorite.

- Antique white
- Silver
- Black
- Light blue metallic
- Dark blue metallic
- Firethorn metallic
- Medium green metallic
- Dark blue-green metallic
- Cream gold
- Light buckskin
- Buckskin metallic
- Brown metallic
- Medium red
- Orange metallic

Power teams.

Engine	Power Rating*	Engine Usage	3-Speed Manual (1)	Turbo Hydra-matic (2,3)
250-1 bbl. Six	110	Standard	2.73† Standard 3.08† Avail. (4)	2.73† Standard 3.08† Avail. (4,5)
305-2 bbl. V8 (6)	145	Avail.	NA	2.56†
350-4 bbl. V8 (6)	170	Avail.	NA	2.56† Standard 3.08† Avail. (4,7)

*SAE net (as installed) rating. NA—Not available. †Axle ratio.

SPECIAL NOTE: California Emission Equipment required for registration in California. In other states, High-Altitude Emission Equipment may be required in areas 4,000 feet or more above sea level. (1) Not available in California or with High-Altitude Emission Equipment. (2) Required in California and with High-Altitude Emission Equipment. (3) Standard on Malibu Classic 4-Door Sedan. (4) Performance ratio. (5) Included with High-Altitude Emission Equipment, California Emission Equipment and with air conditioning on Malibu Classic Sedan. (6) Requires Turbo Hydra-matic, power brakes and power steering. (7) Included with High-Altitude Emission Equipment.

Exterior dimensions.

Wheelbase: coupe—112"; sedan—116".
Length: coupe—205.7"; sedan—209.7". Width: 76.9". Loaded height: coupe—53.3"; sedan—54.0". Tread: front—61.5"; rear—60.7".

Safety and security features.

Occupant protection.

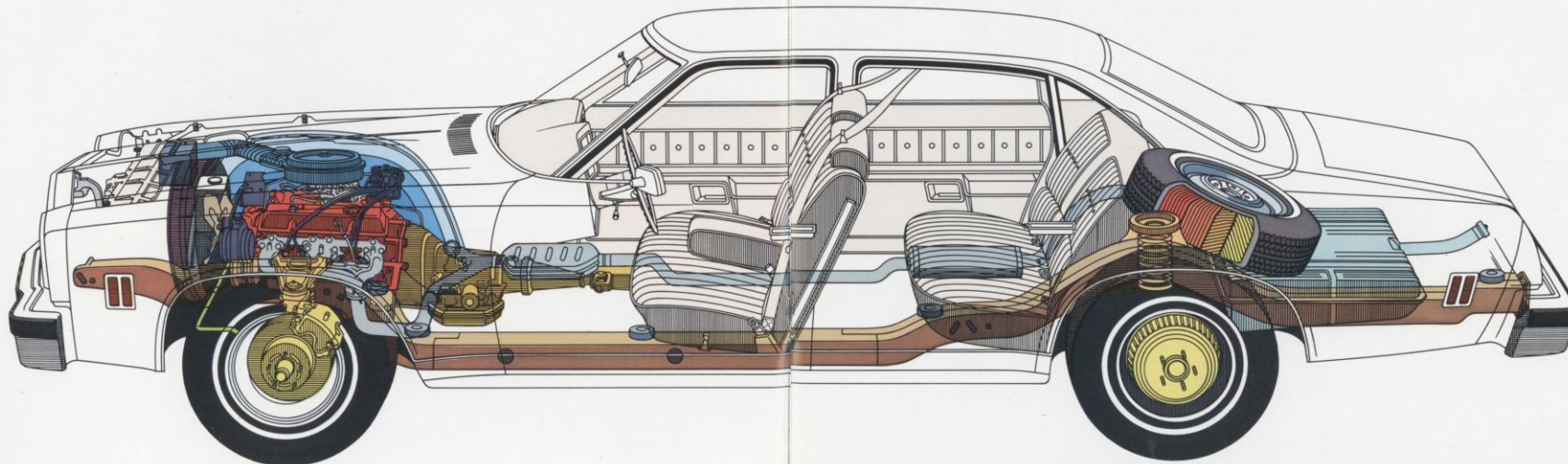
• Seat belts with pushbutton buckles for all passenger positions • Two front combination seat and inertia reel shoulder belts for driver (with reminder light and buzzer) and right front passenger • Energy-absorbing steering column • Safety steering wheel • Passenger guard door locks • Safety door latches and hinges • Folding seat back latches • Energy-absorbing padded instrument panel and front seat back tops • Contoured windshield header • Thick-laminate windshield • Safety armrests.

Accident prevention.

• Side marker lights and reflectors • Parking lamps that illuminate with headlamps • Four-way hazard warning flasher • Lane-change feature in direction signal control • Backup lights • Windshield defrosters, washers and dual-speed wipers • Wide-view inside day-night mirror (vinyl-edged, shatter-resistant glass and deflecting supports) • Outside rear-view mirror • Dual master cylinder brake system with warning light • Starter safety switch • Dual-action safety hood latch.

Anti-theft.

• Ignition-key reminder buzzer • Steering column lock.



The mid-size Chevelle is a most sensible balance of size, comfort and price.

Room for six people.

Along with Chevelle's maneuverable intermediate size, it's also ready with space for six passengers. And to stow bulky items, over 15 cubic feet of storage space is waiting for you in the trunk.

Full foam cushioning in the seats and seat backs.

The going's soft for you and your passengers, thanks to the four-inch full foam construction of seats and seat backs molded to match the contours of your body.

Nice extra touches.

Built into every Chevelle is a strictly-for-comfort feature: flow-through power ventilation that keeps outside air circulating inside the car when the ignition's turned on, even when standing still and with the windows rolled up.

New this year is one-piece carpeting running under the front seat, that not only looks better but also is designed to help create a quiet interior.

Other nice features to have around are Hide-A-Way windshield wipers, an inside hood release, cigarette lighter, and, for nighttime visibility, there are illuminated controls for the windshield wipers and washers as well as the heater and defrosters.

Chevelle is a very quiet car, too.

Ride along in Chevelle and there's an appreciable subdulling of road and wind noises that makes conversation easy. Responsible for this is a generous amount of sound insulation that's selectively applied.



Interior dimensions.

Sedans: Head room—front, 37.9"; rear, 37.3". Hip room—front, 54.7"; rear, 57.8". Shoulder room—front, 59.6"; rear, 58.9". Leg room—front, 42.1"; rear, 36.9". Usable luggage space—15.3 cu. ft.

Coupes: Head room—front, 37.2"; rear, 36.7". Hip room—front, 54.8"; rear—52.7". Shoulder room—front, 59.6"; rear, 58.0". Leg room—front, 42.1"; rear, 32.9". Usable luggage space—15.3 cu. ft.

Malibu Classic interior.

If you have a taste for the distinctive, you'll find quick satisfaction inside Malibu Classic. One obvious indication is the color-keyed instrument cluster with wood-grain vinyl accents, together with a color-keyed steering wheel and steering column. Notice, too, the front seat's inviting fold-down center armrest, the plush cut-pile carpeting stretching the full width of the car, and the welcome light in the glove compartment.

Of course, you can't miss the attractive upholstery that mixes knit cloth with vinyl in a choice of buckskin (coupe only), blue, green or firethorn.

Or you may prefer the tailored look available with all-vinyl in a choice of blue or buckskin for coupe or sedan, as well as black, firethorn or white (with accents in black, blue, green or firethorn) for coupe only.

Malibu interior.

The value and quality that have always distinguished the Chevelle Malibu are obvious once again this year in its handsome interior. It features rich nylon cut-pile carpeting stretching from wall to wall and a new sport cloth-and-vinyl upholstery in black, blue or buckskin. If you prefer all-vinyl upholstery, it's available in black or buckskin, plus white for coupe only (with accents in black, blue, green or firethorn).



Malibu Classic knit cloth-and-vinyl interior.



Malibu Classic available all-vinyl swivel bucket seat interior.



Malibu sport cloth-and-vinyl interior.

Two levels of Chevelle, same set of values.

Even though people always have been impressed by Chevelle's price (many compact and foreign-made models actually cost more), it never shortchanges you on the things that count: family-size room, maneuverability, comfort and quality construction. All of which adds up to a car that has traditionally attracted smart money buyers who want value for what they spend.

Malibu Classic. Our finest Chevelle.

If you want something very special in a very sensible kind of car, the Chevelle Malibu Classic, coupe or sedan, is your choice. The distinguished styling for which it's long been noted is characterized by the new vertical-lock grille accented by stacked rectangular headlights and a stand-up ornament poised on the hood. Taken as a whole, the Malibu Classic stands as a confident, clean-lined car ready to deliver generous amounts of satisfaction as well as value.

Still another instance of Chevelle's standout looks is found in the Malibu Classic Landau Coupe that's all a Malibu Classic is and more. Some noteworthy Landau touches include the smart vinyl half-roof, full wheel covers, color-coordinated body pinstriping and bumper rub strips. Look, too, for dual body-color sport mirrors with the driver's side remote-controlled, dual horns and an emblem setting off the rear quarter window.

Malibu. Our lowest priced Chevelle.

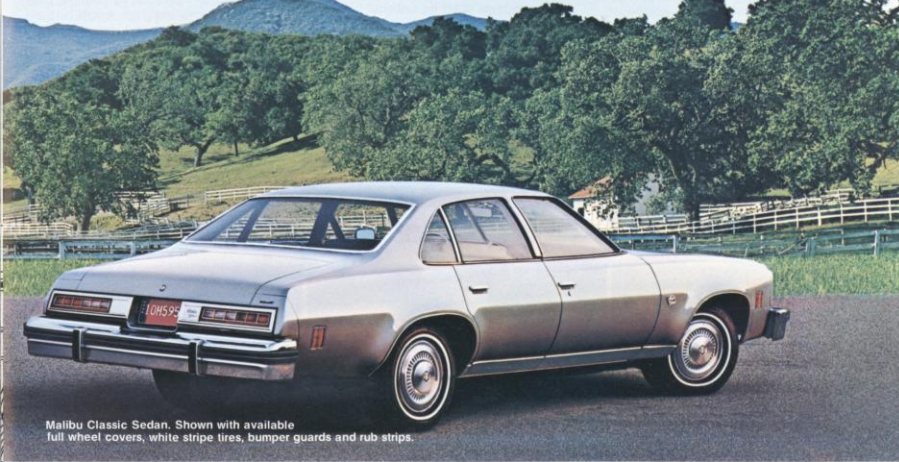
Malibu, as the embodiment of Chevelle value, is a car in which we take great pride. In either coupe or 4-door sedan, Malibu provides passenger room for six, the riding ease of molded full foam seats and door-to-door cut-pile carpeting. Adding to driving pleasure are front disc brakes and Full Coil suspension with front stabilizer. For the right-size car at the right price, the '77 Chevelle Malibu comes off as an impressive automotive buy.

Chevelle wagons, too.

Talk about value and who can ignore Chevelle's collection of station wagons that carry people or a load with equal ease while also offering mid-size maneuverability. The many merits of the Chevelle wagon line—Malibu Classic or Malibu—are fully described in the 1977 Chevrolet station wagon catalog. Pick up a copy soon at your Chevrolet dealer's showroom.



Malibu Classic Landau Coupe. Shown with available front bucket seats, white stripe tires and bumper guards.



Malibu Classic Sedan. Shown with available full wheel covers, white stripe tires, bumper guards and rub strips.



Malibu Coupe. Shown with available body side molding, Exterior Decor Package, Rally wheels, white stripe tires, bumper guards and rub strips.



Malibu Sedan. Shown with available Exterior Decor Package, full wheel covers, white stripe tires, remote-control outside mirror, tinted glass, bumper guards and rub strips.

Chevelle is a very complete car, but there's still room to get personal.

Along with the many fine features built into every Chevelle, your special needs and tastes can undoubtedly be satisfied by the available options listed here and on the opposite page. Your Chevrolet dealer has availability details. Numbered items described here are pictured below.

1. Cruise-Master speed control lets you select the desired cruising speed, then maintains it automatically. Tap on the brake and control disengages.
2. Delco-GM radios and tape players offer a variety of listening pleasure. In making your buying decision, consider the Delco sound systems produced to General Motors and Chevrolet quality standards. Only genuine Delco radios carry the Delco-GM trademark. Choose from an AM radio, AM/FM radio,

AM/FM stereo radio, and an eight-track stereo tape system with either AM or AM/FM stereo radio. Windshield antennas are included with factory-installed radios.

3. Body side moldings are not only decorative but contain protective vinyl inserts.
4. Comfortilt steering wheel personalizes its angle for you by letting you adjust it to six different positions. (Available only with Turbo Hydra-matic transmission.)

5. Power door locks have control on each front door to instantly lock all doors. Power windows have master switch on driver's side, separate switches for each door's window.

6. Bumper guards are located front and rear. Bumper rub strips are resilient, run the full width of the bumper.

7. Sport wheel covers are custom-styled for a wire-wheel effect.

8. Rally wheels lend a racing look that includes special hub and trim rings.

9. Full wheel covers, new for '77, are of durable stainless steel. (Standard on Landau.)

10. Econominder Gauge Package shows when car is being driven in an economical range. Includes voltmeter, temperature and economy gauges.

11. Rear window defogger uses forced air to help eliminate steam on window.

12. Twin sport mirrors are remote controlled, body colored.

Easy and comfortable.

- Power assist for standard front bench seat adjusts to different positions, up and down, forward and back
- Power trunk opener lets you open trunk from inside car
- Four-Season air conditioning uses one simple unit to cool, heat, defrost and defog
- Tinted glass softens the glare of daylight or sunlight. Recommended when air conditioning is installed
- Center console features shift lever and handy storage compartment. (Available only for coupes equipped with bucket seats and Turbo Hydra-matic transmission.)
- Swivel bucket

seats swing around to face doors, ease getting in and out of car. Available in all-vinyl for Malibu Classic Coupes only (including Landau) in black, blue, buckskin, firethorn or white (with accents in black, blue, green or firethorn)

• Electric clock has easy-to-read face

• Illuminated visor vanity mirror for passenger's nighttime use

• Map light, a welcome after-dark aid

• Auxiliary Lighting Group, a collection of additional lights for ashtray, glove compartment (standard on Malibu Classic), luggage compartment, map and underhood plus headlight reminder buzzer and courtesy light

• Remote-control outside rearview mirror for driver's side. (Not available on Malibu Classic Landau or when sport mirrors are ordered.)

• Sport mirrors match body color, are remote controlled on left-front door, manually operated on right-front door. (Standard on Malibu Classic Landau.)

• Rear seat speaker for an added listening dimension. (Available only with AM or AM/FM radio.)

• Stowaway spare tire saves space in luggage compartment.

For appearance sake.

- Padded vinyl roof cover gives a sporty touch to coupes or sedans. (Landau-style standard on Malibu Classic Landau.)
- In a choice of white with any exterior color as well as black, blue, green, buckskin, firethorn or silver, depending on exterior color
- Deluxe seat and shoulder belts are color-keyed to car's interior
- Exterior Decor Pack-

age adds a dressy touch with roof drip and wheel opening moldings. (Available for Malibu only.)

- Floor mats, front and rear, are color-keyed to interiors
- Aluminum door-edge guards protect against chipped paint
- White stripe on blackwall steel-belted radial ply tires
- White stripe fiberglass belted radial ply tires.

Mechanical.

• Variable-ratio power steering takes the effort out of steering and parking. (Required with V8 engine.)

• Turbo Hydra-matic transmission shifts automatically into three forward gears. Can also be shifted manually. (Required with V8 engine. Standard on Malibu Classic Sedan.)

• Power brakes call for only light pedal pressure to stop car. (Required with V8 engine.)

• Performance axle ratio

• Positraction permits maximum available added rear wheel traction

• Intermittent windshield wipers run at preset intervals when continual operation is not necessary

• Heavy-duty suspension includes special rate front and rear springs and matching shock absorbers

• Sport suspension. (Available with V8 engine and GR70-15 tires only.)

• Heavy-duty battery

• 61-amp Delcotron generator. (Included when air conditioning is ordered.)

• Heavy-duty radiator.



Malibu Classic instrument panel shown with available Four-Season air conditioning, AM/FM Delco radio and electric clock.



Hitching up to Chevelle value.

Add trailering capability to the long list of attributes that make Chevelle such an attractive value.

When equipped with the proper recommended trailering package, Chevelle can tow up to 6,000 lbs. of family travel trailer, boat or what have you.

Ask your Chevrolet dealer to help you equip Chevelle for your towing needs. He'll talk about load-leveling shock absorbers, a load-distributing hitch platform or ball frame hitch, special mirrors, and other available trailering options to help make traveling with a trailer more carefree and pleasurable.

Of course, your Chevelle is the most important piece of trailering equipment of all. It can get you to the fun without strain on the car or the passengers.



All illustrations and specifications contained in this literature are based on the latest product information available at the time of publication approval. The right is reserved to make changes at any time without notice in prices, colors, materials, equipment, specifications and models, and to discontinue models. Chevrolet Motor Division, General Motors Corporation, Detroit, Michigan 48202.

September, 1976

Made in U.S.A.

Chevrolet

3414