

8.2 LITRE

***Fleetwood Eldorado
by Cadillac***



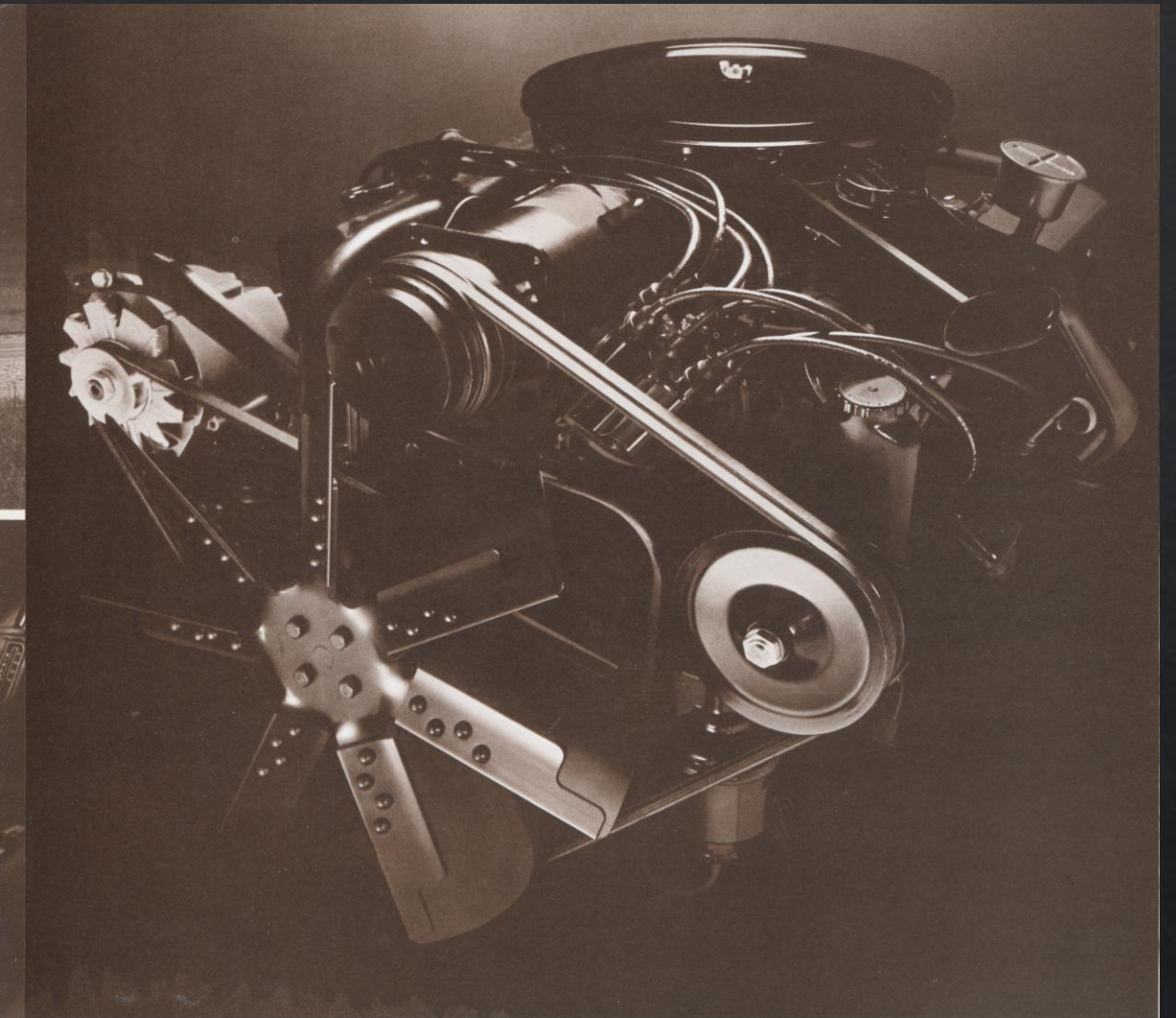


The 8.2 litre Fleetwood Eldorado brilliantly expresses the spirit of the seventies. Its new engine of 8.2 litres (the internationally recognized metric equivalent of 500 cubic inches), offers an advanced degree of performance reserved only for the Eldorado owner.

In fact, the 8.2 litre engine, with its longer stroke and deeper breathing, has no close counterpart among the world's luxury personal cars. Of particular significance to the discerning owner is the fact that the 8.2 litre engine has the largest displacement and greatest torque of any standard production passenger car in the entire industry.

Created exclusively for, and available only on the front-wheel-drive Eldorado, the new power plant delivers such brilliant, full-range performance that it is certain to impress even the most enthusiastic of past Eldorado owners. Yet, there is always an eager reserve for the many power assists which make driving an Eldorado so effortless.

The magnificent capacity of the new 8.2 litre Eldorado engine can be sensed in the very tone of its response. And the moment you drive it, you will know that the spirited Fleetwood Eldorado has indeed, left the sixties far behind.



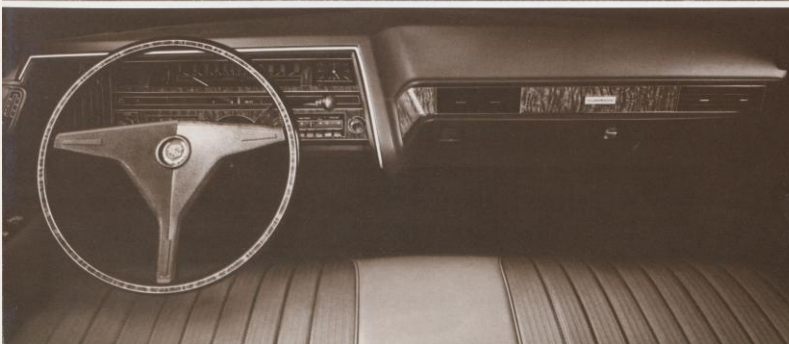
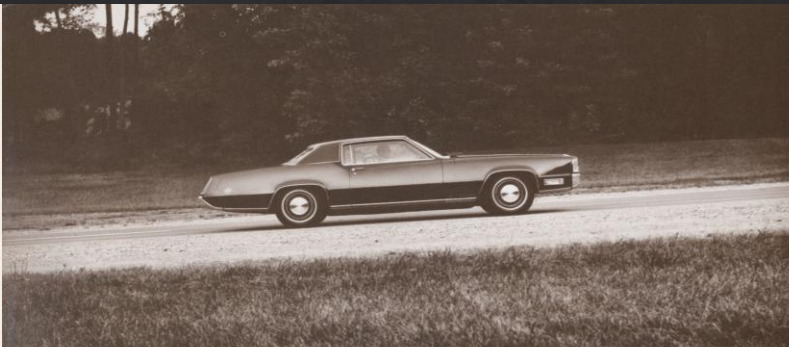


The 8.2 litre Fleetwood Eldorado brilliantly expresses the spirit of the seventies. Its new engine of 8.2 litres (the internationally recognized metric equivalent of 500 cubic inches), offers an advanced degree of performance reserved only for the Eldorado owner.

In fact, the 8.2 litre engine, with its longer stroke and deeper breathing, has no close counterpart among the world's luxury personal cars. Of particular significance to the discerning owner is the fact that the 8.2 litre engine has the largest displacement and greatest torque of any standard production passenger car in the entire industry.

Created exclusively for, and available only on the front-wheel-drive Eldorado, the new power plant delivers such brilliant, full-range performance that it is certain to impress even the most enthusiastic of past Eldorado owners. Yet, there is always an eager reserve for the many power assists which make driving an Eldorado so effortless.

The magnificent capacity of the new 8.2 litre Eldorado engine can be sensed in the very tone of its response. And the moment you drive it, you will know that the spirited Fleetwood Eldorado has indeed, left the sixties far behind.



Vital Statistics of the World's Finest Personal Car

ENGINE: 8.2 litre (500-cu.-in.) displacement, 400 horsepower, 550 foot-pounds torque. Compression ratio 10 to 1. Bore, 4.30. Stroke, 4.304.

TRANSMISSION: Cadillac Turbo Hydra-matic.

FRONT-WHEEL DRIVE.

AXLE GEAR RATIO: 3.07 to 1.

SUSPENSION: Torsion bar, front; leaf spring, rear, with two horizontal and two vertical shock absorbers.

STEERING: Cadillac variable-ratio power steering.

BRAKES: Disc, front. Composite, finned drum-type, rear. Split hydraulic master cylinder provides independent braking for front and rear brake systems.

TREAD: 63.5", front; 63", rear.

WHEELBASE: 120".

OVERALL LENGTH: 221".

STANDARD POWER EQUIPMENT: Automatic Level Control ♦ Power Window Regulators ♦ Power Front-seat Adjustment (two-way) ♦ Variable-ratio Power Steering ♦ Power Brakes (disc front) ♦ Turbo Hydra-matic Transmission ♦ Tandem-articulated, 3-speed Windshield Wipers with 4-jet Washers.

SUNROOF (power-operated): Available at extra cost.

*Your authorized Cadillac dealer
has the keys.*



MARK OF EXCELLENCE