

1979 FORD  
**GRANADA**  
An American Classic.



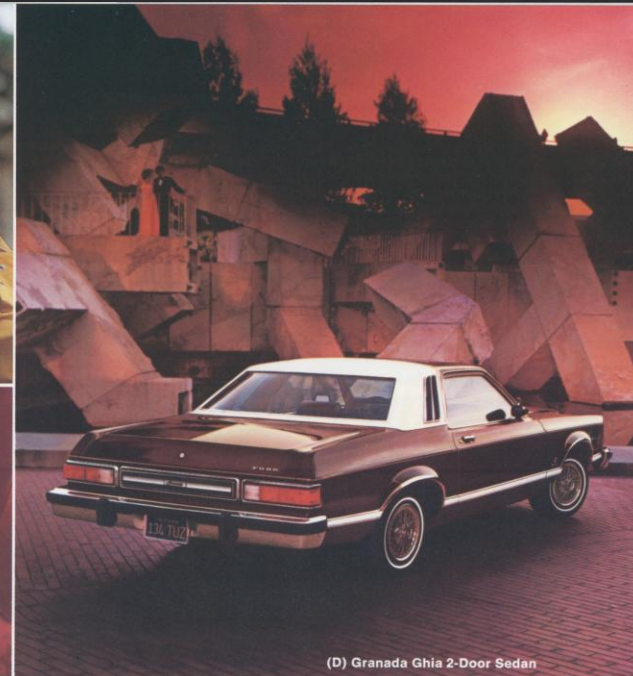
FORD GRANADA  
GHIA



(A) Granada Ghia 4-Door Sedan with new Tu-Tone paint



(B)



(D) Granada Ghia 2-Door Sedan



(C)

**Beautifully designed to be driven with pride.**

Right from the beginning, Granada was for the car owner who wanted something more and different. Something apart in size. Something different in looks. Something more in luxury and quality.

That was in 1974. Now in 1979—and more than a million owners later—Granada, Ghia and ESS still represent "something more and different." And now these

attributes, featured on the 5-passenger Ford Granada from the start, mean more to more people than ever before.

**Granada Ghia is a beautiful case in point.** Its standard equipment list includes all of these impressive and desirable features. Bodyside, hood and decklid paint stripes. Distinctive Ghia badges. Wide color-keyed bodyside moldings with integral wheel lip moldings. Matching lower back panel of odense grain vinyl (concealing the gas cap). Color-keyed

wheel covers. Bright left-hand remote control rearview mirror. A wide, foam-cushioned flight bench front seat with fold-down center armrest and handsomely tailored all-vinyl trim sets the interior style. Seatback map pockets. Deluxe door trim with burl walnut woodtone sill appliques. Deluxe steering wheel with matching woodtone applique. Eighteen-ounce cut pile carpeting. Color-keyed belts. Deluxe Sound Package. Even special luggage compartment trim.

These and more are all included in Ghia. The standard power train on all '79 Granadas is a 4.1 litre (250 CID) 6-cylinder engine with a very sensible—for this day and age—4-speed manual overdrive transmission.\* Fully synchronized for smoothness, with a floor-mounted shift in the European manner. Also offered, 5.0 litre (302 CID) V-8 and SelectShift automatic transmission, two of many selections from Granada's long list of options (see pages 10, 11).

And, as strikingly handsome and luxurious as it appears here, Ghia is just one of the 1979 Ford Granadas. ESS and Granada models are equally impressive in their own way, whether viewed from behind the wheel or moving down the road. Even when compared with some cars priced hundreds of dollars above them, we believe the '79 Granadas will impress you with something more and something different. . . and something else that Americans call value.

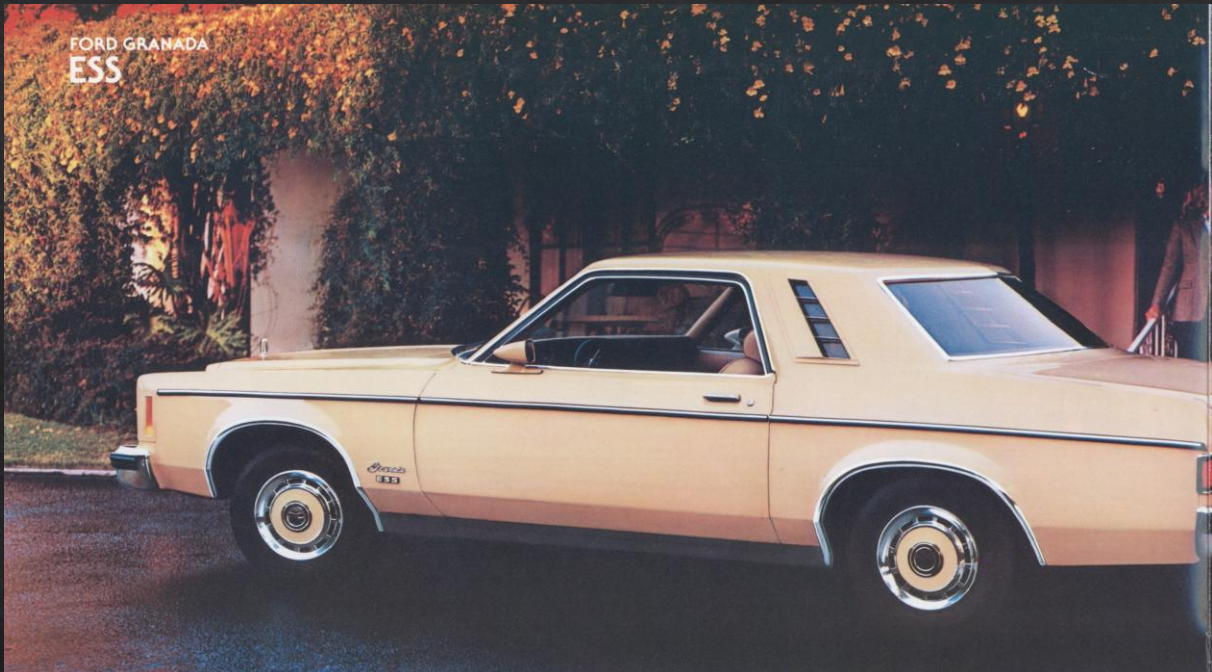
(A) Granada Ghia 4-Door Sedan shown in one of the six distinctive new Granada Tu-Tone paint selections: Black (1C) over Silver Metallic (1G). Dual sport remote control mirrors and cornering lamps are optional selections.

(B) Map pockets in flight bench seat back provide handy and stylish stowage areas.

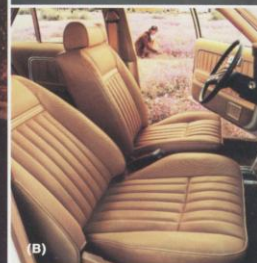
(C) Windshield wiper/washer controls. Conveniently placed at the end of the turn signal lever. Pushbutton activates washer, switch sets wiper speed.

(D) Granada Ghia 2-Door Sedan in Dark Cordovan Metallic (8N). Vinyl half roof in White, dual sport remote control mirrors and wire wheel covers are popular options. **Front cover:** Granada Ghia 4-Door Sedan in new Tu-Tone paint, Black (1C) over Silver Metallic (1G). Lacy spoke aluminum wheels, cornering lamps are options. **Note:** See Notable Standard Features, Measurements and color code references on back cover. Some items shown are optional. See options list on pages 10-11. \*Not available in California.

FORD GRANADA  
ESS



(A) Granada ESS 2-Door Sedan



(D) Granada ESS 4-Door Sedan

**Better Ideas  
with a European flavor.**

Granada ESS offers you a distinctive interpretation of European automobile styling. Trim proportions. Clean lines. A regal stance. To anyone who feels one must look to Europe for fine automobile styling, Granada ESS says, "Look again." For thousands less than what you could spend for some European cars, you can have in ESS a roomy and comfortable

5-passenger sedan (2-door or 4-door), smartly European in styling from its blackout grille to its tricolor taillights. Black windshield wipers, window frames, bodyside moldings (with bright inserts), rocker panels and back panel appliques. Louvered opera window appliques (2-door), hood and decklid paint stripes, dual sport remote control mirrors (finished in body color). Color-keyed wheel covers. Wide wheel lip moldings. Inside, Granada ESS gives you more

European flavor. Bucket seats with European-style head restraints and deep-pleated all-vinyl trim are standard. (Flight bench seats in cloth or vinyl, or bucket seats in leather and vinyl are options. For more interior details, see pages 8-9, illustrations A, B, C.)

Standard engine is the 4.1 litre (250 CID) Six with 4-speed manual overdrive transmission\*. Options include 5.0 litre (302 CID) V-8 and SelectShift, the 3-speed

automatic transmission that lets you shift manually when you like.

Your choice of options is wider than in many other cars in Granada's price range. For example, you can select from nine separate radios (including a CB radio). Two types of air conditioning. Six power options (including power moonroof shown at right in "C"). Unusual options like the Granada Illuminated Entry System and more (see pages 10, 11).

**(A) Granada ESS 2-Door Sedan.** Shown in Antique Cream (62). The ESS is offered in nine solid colors, each enhanced by this model's distinctive and dramatic blackout paint treatment.

**(B) Granada ESS interior.** The bucket seat design and "chain pattern" vinyl trim are unique to ESS among Granadas. So are the European-style head restraints. The color is Camel (PY). Both seats recline for added comfort.

**(C) Power moonroof.** Tinted glass panel retracts at the push of a button to let sun, fresh air in, or closes up tight in bad weather. (Available in combination with vinyl roof on all models.)

**(D) Granada ESS 4-Door Sedan.** Look once and you have to look again to make sure ESS isn't an expensive European road car. Shown in Polar White (9D) with standard ESS blackout trim and color-keyed wheel covers.

**Note:** See Notable Standard Features, Measurements and color code references on back cover. Some items are optional. See options list on pages 10-11.

\*Not available in California.

FORD  
GRANADA



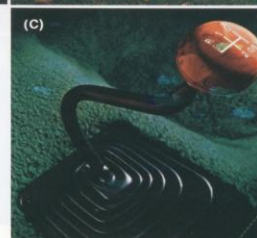
(A) Granada 4-Door Sedan



(B)



(D) Granada 2-Door Sedan



(C)

**The practical car that doesn't look it.**

You're looking at the lowest-priced cars of the Granada series. But you'd never know it from their looks or standard equipment. Flight bench seat with fold-down armrest. Four-speed manual overdrive transmission.\* Chrome-plated grille. Full wheel covers. Inside hood release. Steel-belted radial tires. Some cars that cost a good deal more than Granada don't offer

all these as standard equipment. Few cars—other than Granada—offer all these options: automatic temperature control air conditioning. Cornering lamps. Quad 8 and cassette tape players. Power moonroof. Illuminated Entry System. These and more (see pages 10-11). You can buy Granada for its practicality (and many people do). With 4.1 litre (250 CID) Six, 4-speed manual overdrive\* and a reduction in scheduled maintenance requirements (see back cover), Granada

is a very practical car indeed. Its roomy interior seats five in comfort; the trunk with over 15 cu. ft. of usable space is wide, deep and easy to load. And, if you want style, Granada is your choice again. Classic uncluttered lines. A rich interior (with warm woodtone appliques in the instrument panel and window sills, thick carpeting, handsome all-vinyl trim), that looks like hundreds more than the Granada price. Options (like power seats, new Tu-Tone paint, and

more), that can add even more style and individuality to your Granada. Granada still has more to offer: wonderfully practical features like handy windshield wiper controls mounted in the turn signal lever (page 3) and articulated wiper arms (driver's side) to clear more of the windshield. A practical car with style—a stylish car that doesn't look practical. As over a million owners already know, the car that best fits that description is Granada.

**(A) Granada 4-Door Sedan.** Shown in new Medium Blue Glow (3H) with Midnight Blue vinyl roof. Both are options as are front cornering lamps, also shown, an added night-driving convenience.

**(B) Tricolor taillights** beautifully accent Granada's rear end styling. They also neatly combine taillights, turn signals, backup lights, and function as rear side markers as well.

**(C) 4-speed manual overdrive transmission.\*** An important feature that

is standard on Granada. Overdrive's 4th gear allows the engine to turn more slowly at road speed. This helps reduce engine wear. Engine runs quieter, too.

**(D) Granada 2-Door Sedan** in Dark Jade Metallic (46). Lacy spoke aluminum wheels, vinyl insert bodyside molding, front cornering lamps, and bright mirrors are optional.

**Note:** See Notable Standard Features, Measurements and color code references on back cover. Some items are optional. See options list on pages 10-11.

\*Not available in California.



## FORD GRANADA INTERIORS

All the elegant touches.

Is "elegant" going too far in describing the interiors in a car of Granada's price class? We think not. And we believe the proof of our contention is impressively represented on these pages.

First of all, Granada offers you what, in some cars in its class, might be termed the "luxury" of inner space. Granada's

so skillfully that you may be reminded of much more expensive cars. Warm woodtone appliques lend the look and attention to detail of the custom body builder.

In addition to the standard flight bench seat (with fold-down center armrest) in Granada and Ghia, two styles of bucket seats are offered—one exclusively with ESS. (Interior Decor Group option offers bucket or flight bench seats with Ghia trim, Ghia door trim and deluxe steering wheel in Granada 2- and 4-Door Sedans.) In all, you can choose from two selections

noted in the descriptions that follow.

**(A) Ghia leather bucket seats.** Optional leather seating surfaces with smooth-grain vinyl trim lend a look of European touring car luxury. Color: Dark Red (MD). Offered in ESS, and Granada with Interior Decor Group option.

**(B) Instrument panel—woodtone appliques of burled walnut.** The warmth and beauty of woodtone appliques reaches full width. Driver has a clear view of instruments, easy access to controls. Granada glove box is large and lockable. Digital clock option is shown centered in

**(E) Smooth-grain vinyl flight bench seat—standard on Ghia.** In addition to Ghia, this trim is also offered as an option in ESS and with the Interior Decor Group. Shown in Cordovan (GF).

**(F) ESS "chain pattern" vinyl bucket seats.** Unique styling and vinyl upholstery, as well as European-style head restraints, mark this interior as reserved for ESS only. Color shown: Camel (PY). Also offered in cloth/vinyl and leather/vinyl.

**(G) Box-weave cloth/smooth-grain vinyl flight bench seat—Granada.** This trim selection is an optional alternative to



wide-opening doors welcome you into an interior that is thoughtfully designed with the comfort of five grown people in mind. There's room to stretch out. Seats are angled for proper support and deep foam cushioned to add to your relaxation as you ride.

Above all, the luxury of style that has been captured in Granada interiors will stay with you longest. Supple vinyls, rich cloth fabrics and lush, color-keyed carpeting are combined so beautifully and tailored

of cloth and vinyl trim, two of vinyl (one of which is exclusive with ESS) and one of leather seating surfaces.

See Granada's interior selection up close with the aid of your Ford Dealer's color and trim book. Then sit in a Granada seat and look around you. We think you'll agree—"elegant" is the word.

Most '79 Granada interior selections are offered in six color choices: Dove Grey, Dark Red, Medium Blue, Dark Jade, Camel, and Cordovan. Any exceptions are

the glove box door.

**(C) Individually reclining bucket seats.** This seat option features separate forward and back adjustment, plus individual recliner, for driver and passenger. (Standard on ESS, optional on Ghia or with Interior Decor Group.)

**(D) Ghia finely ribbed cloth/smooth-grain vinyl bucket seats.** Trim option shown in Dove Grey (BS). With Interior Decor Group option in Granada sedans.

standard all-vinyl trim in the same pattern. Color is Medium Blue (JB). Offered as well in Dark Red, Jade, Camel.

**(H) Interior Decor Group Option.** Shown in finely ribbed cloth and smooth-grain vinyl on flight bench seat. The color is Jade (BR). Option also includes Ghia door trim (excluding badges) and deluxe steering wheel on Granada sedans.

**Note:** Interiors above may vary from production in some minor trim details. Some items shown are optional; see options list on pages 10-11.

## FORD GRANADA OPTIONS

### Add your personal touch.

#### Audio

Ford offers a superb selection of radios and audio equipment for the Granada of your choice. All are precision engineered and built to exacting Ford standards. For details, get the booklet "New Dimensions in Sound" at your Ford Dealer's.

- AM Radio. Five pushbuttons for tuning; single dash-mounted speaker.
- AM Radio with 8-Track Tape.\* Regular

- AM/FM Stereo Radio with Cassette Tape.\* Same system as above but uses compact tape cassettes.

- (A)** AM/FM Stereo Radio with Quad 8 Tape.\* Four-channel sound plus the added enjoyment of Quad 8 tapes.
- (B)** 40 Channel CB Radio. Microphone with handy controls disconnects from security. (Chassis mounted in trunk.) Automatically scans for active channel. Override feature lets you receive CB signal through front speakers while listening to either AM or FM radio programs. Available with all factory-installed sound systems.

- Jade Glow (7L) or Camel Glow (8J). Tu-Tone Paint. A dramatic new way of combining colors. Color-keyed wheel covers included on Granada sedans. See cover, page 2.

- Bodyside and Decklid Paint Stripes. See page 7.
- Vinyl Roof. Nine color choices. Two styles: full vinyl roof on 2- or 4-door models; vinyl half roof on 2-doors only. See pages 3, 6.

#### Comfort

- SelectAire Conditioner. Combines cooling, heating, defrosting in one unit for year-round comfort.

Std. on ESS. See page 9.

#### Convenience

- Digital Clock. Full time display (including seconds). Quartz crystal for unusual accuracy. See page 8.
- (E)** Console. Convenient storage area between front bucket seats. Includes special warning lights to signal: Headlamps On, Door Ajar, Trunk Ajar, Low Fuel.
- Convenience Group includes all of these useful items: interval windshield wipers, automatic parking brake release (with column-mounted SelectShift), automatic seat back

- Front Cornering Lamps. Provide side lighting for dark corners. Shown on front cover, pages 2, 5, 6 and 7.\*

- (G)** Light Group includes: dual beam dome/map light (shown), plus lights in the luggage compartment, glove box, under the hood, front ashtray, under the instrument panel, rear door courtesy light switches (4-doors), and "headlamps on" warning buzzer.
- Remote Control Decklid Release lets you unlock the trunk without leaving the car.
- Dual Sport Remote Control Mirrors. Both can be aimed from the driver's

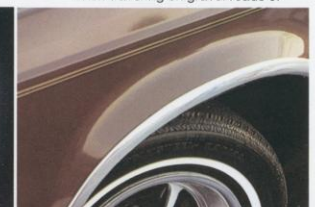
- Visibility Group. Includes: dual bright outside mirrors, inside day/night mirror and visor/vanity mirror.
- (J)** Tilt Steering Wheel. Adjustable to several driving positions.

#### Interiors

- For seats and trims, see pages 8, 9.
- Performance**
- 5.0 litre (302 CID) 2V V-8.\*
- Cold Weather Group. Heavy-duty battery and alternator, plus engine block heater.
- Heavy-Duty Group. Includes: heavy-duty battery, heavy-duty alternator and Extra Cooling Package.

- Power Door Locks let you lock all doors from the driver's seat. Combined in driver's master control panel when power windows are also ordered (see illustration "L").
- Power Moonroof. The open-air feeling of a convertible. See page 5.
- (K)** Power Seats. Power adjustment controls available for bucket seats (driver only) and flight bench seats.
- Power Steering. Reduces steering effort, especially helpful in parking.
- (L)** Power Side Windows. Individual controls at each window. Master control panel for all windows at

- backed by Ford Motor Company and honored by participating Ford Dealers nationwide, is available to provide longer protection than your car's basic warranty against specified major component repairs. Consult your Ford salesman for availability and details.
- Lower Bodyside Protection (in addition to Ford corrosion protection measures noted on the back cover), offers an application of vinyl along the lower sides of the body to help provide extra protection against stone pecking. Especially important when traveling on gravel roads or



- radio plus 8-track tape player as an entertainment alternative.
- AM/FM Monaural Radio. Your choice of AM or FM programs.
- AM/FM Stereo Radio.\* Two radio bands, one in rich stereo.
- AM/FM Stereo Search Radio.\* Same as stereo radio with added feature of automatic station selection.
- AM/FM Stereo Radio with 8-Track Tape.\* Another versatile entertainment choice. Two radio bands plus tape player for your favorite 8-track tapes.

Comes with fixed AM/FM/CB triband antenna and FCC license application. \*Dual speakers front and rear included.

#### Appearance

- Color-Keyed Deluxe Belts (pgs. 8-9).
- Interior Decor Group. Shown and detailed in "H," page 9.
- Bodyside Accent Moldings. Add decorative highlights to 2- or 4-door Granada. Shown on page 6.
- Rocker Panel Moldings.
- Metallic Glow Paint. New Medium Blue Glow (3H), (shown on page 6), Light

- (C)** SelectAire Conditioner with Automatic Temperature Control. Same efficient unit as described above with thermostatic controls to help maintain your comfort in any season.
- Tinted Glass—Complete. Reduces sun's heat and glare. Recommended with air conditioning.
- Tinted Glass—Windshield.
- (D)** Manual 4-Way Adjustable Bucket Seat. Provides driver seat adjustment up, down, forward and back.
- Individually Reclining Bucket Seats.

- release (in 2-doors with bucket seats), color-keyed deluxe belts.
- Rear Window Defogger. Concealed fan below the window helps keep it clear of condensation inside, light snow or ice on the outside.
- Electric Rear Window Defroster. Heating element on glass quickly removes snow or ice.
- (F)** Illuminated Entry System. Lift the door handle and both the interior and key lock are lighted for greater ease of entry and security after dark.

- seat. Color-keyed to body finish. Std. on ESS, shown on pages 2-5.
- Illuminated Visor/Vanity Mirror. A handy grooming aid.
- (H)** Fingertip Speed Control. Cruising speeds maintained without touching the accelerator. Helps ease long distance driving—can help save fuel. Controls mounted in steering wheel.
- (I)** Inflatable Spare Tire. Allows more space in trunk for stowage. Available at no extra cost. *Intended for temporary emergency use only.*

- Heavy-Duty Suspension. Stiffer springs and shocks for heavy loads.
- SelectShift Automatic Transmission lets you go fully automatic or shift manually if you choose. Available with column-mounted control or floor-mounted in console with bucket seats (separate options). See page 5. \*Available in California only with automatic transmission.
- Power Assists**
- Power Front Disc Brakes. Reduced braking effort.

- driver's position.
- Protection**
- Vinyl Insert Bodyside Moldings. Black vinyl inserts help fend off parking lot nicks and scrapes. Available on Granada. Page 7.
- Deluxe Bumper Group. Includes front and rear guards and full-width rub strips. Shown on all models.
- Protection Group. Door edge guards (except Ghia), front floor mats with carpet inserts, license plate frame(s).
- (M)** The Ford Extended Service Plan,

- where use of road salt is heavy.
- Tires**
- Steel-belted radial ply tires in black or white sidewall and raised white letter styles in a full range of sizes. Consult your Ford Dealer for the tires best suited to your kind of driving.
- Wheel Covers/Wheels**
- (N)** Deluxe Wheel Covers (4).
- Wire Wheel Covers (4). See page 3.
- Lacy Spoke Aluminum Wheels (4). Shown on front cover, page 7.
- (O)** Styled Steel Wheels/Trim Rings (4).

## Granada Choices



Granada 2-Door Sedan  
Antique Cream (62)



Granada 4-Door Sedan  
Camel Glow (8J)



Ghia 2-Door Sedan  
Midnight Blue Metallic (3L)



Ghia 4-Door Sedan  
Silver Metallic (1G)



ESS 2-Door Sedan  
Polar White (9D)



ESS 4-Door Sedan  
Dark Jade Metallic (46)

## Notable Standard Features

### GRANADA

#### FUNCTIONAL

- 4.1 litre (250 CID) 1V 6-cylinder engine with DuraSpark Ignition
- 4-speed fully synchronized overdrive transmission\*, floor-mounted shift
- Front disc brakes
- Foot-operated parking brake with warning light
- Inside hood release
- Turn signal-mounted wiper/washer controls
- Rectangular headlamps/parking lamps
- Tricolor taillights
- 14" BSW steel-belted radial ply tires
- Ford Motor Company Lifeguard Design Safety Features

\*Not available in California.

#### APPEARANCE AND COMFORT

- Flight bench front seat, all-vinyl trim
- 10-oz. cut pile carpeting
- Burlwood instrument panel applique
- Lockable glove box
- Cigarette lighter
- Automatic inertia-type seat back release (2-door)
- Rear seat ashtrays
- Luggage compartment mat
- Granada Sound Insulation Package
- Hood ornament

- Chrome-plated grille
- Bright twin opera window (2-door), bright windshield and backlite, bright window, drip, belt, and wheel lip moldings
- Stainless steel full wheel covers (4)
- Bright gas cap with Granada script

### GRANADA GHIA

Includes most of the standard Granada features, plus these additions or variations:

- Deluxe flight bench front seat with seat back map pockets, all-vinyl trim
- 18-oz. cut pile carpeting
- Deluxe steering wheel with burlwood tone applique
- Day/night inside rearview mirror
- Deluxe door trim panels with burlwood tone sill appliques, carpeted lower sections
- Color-keyed deluxe belts
- Rear door courtesy lights (4 door)
- Deluxe luggage compartment trim
- Deluxe Sound Insulation Package
- Dual note horn
- Ghia exterior and interior ornamentation
- Hood, bodyside and decklid paint stripes
- Wide bodyside moldings with color-keyed vinyl inserts and integral bright wheel lip moldings
- Bright LH remote control rearview mirror

- Color-keyed wheel covers (matching color of body or optional vinyl roof)
- Rear panel applique with concealed gas cap

### GRANADA ESS

Includes most of the standard Granada features, plus these additions or variations:

- Reclining bucket seats with map pockets, all-vinyl trim, European-style head restraints
- 18-oz. cut pile carpeting
- Leather-wrapped steering wheel
- Day/night inside rearview mirror
- Deluxe door trim panels with woodtone inserts, carpeted lower sections
- Color-keyed deluxe belts
- Rear door courtesy lights (4-door)
- Deluxe luggage compartment trim
- Deluxe Sound Insulation Package
- Dual note horn
- ESS ornamentation (front fenders)
- Hood and decklid paint stripes
- Black window frames, windshield wipers, grille, bodyside moldings (with bright inserts), back panel applique, rocker panels
- Dual sport remote control mirrors
- Color-keyed wheel covers (matching color of body or optional vinyl roof)
- Deluxe Bumper Group

Options list is shown on pages 10-11.

## Measurements

	Wheelbase	Length	Height	Width	Trunk Cap. (cu. ft.)	Curb Wt. (lbs.)**	Fuel Cap. (gal.)	Passenger Cap.
<b>GRANADA 2-DOOR</b>	109.9"	197.8"	53.2"	74.0"	15.4(a)	3,204	18	5
<b>GRANADA 4-DOOR</b>	109.9"	197.8"	53.3"	74.0"	15.4(a)	3,249	18	5
<b>GHIA 2-DOOR</b>	109.9"	197.8"	53.2"	74.5"	15.3(a)	3,240	18	5
<b>GHIA 4-DOOR</b>	109.9"	197.8"	53.3"	74.5"	15.3(b)	3,282	18	5
<b>ESS 2-DOOR</b>	109.9"	197.8"	53.2"	74.5"	14.3(a)	3,256	18	5
<b>ESS 4-DOOR</b>	109.9"	197.8"	53.3"	74.5"	14.3(a)	3,306	18	5

(a) 15.8 cu. ft. with Inflatable Spare

(b) 14.9 cu. ft. with Inflatable Spare

\*\*With 4.1 litre (250 CID) 1V Six and 4-speed transmission

## Notes

**CORROSION PROTECTION.** Ford takes steps to see that your new Granada is engineered and built to high quality standards. And in order to help keep your Granada looking new, we incorporate the use of pre-coated steels, such as galvanized steel and chromium/zinc-rich primer coated steel, vinyl sealers, aluminized wax in critical areas, and enamel as a finishing coat.

**REDUCED SCHEDULED MAINTENANCE.** As part of a continuing program to lower the cost of ownership, scheduled maintenance requirements on most new Fords have been reduced dramatically

in recent years. For example, with the new 1979 Ford Granada, the recommended maintenance schedule is now 10,000 miles (7,500 miles with V-8 engines) or 12 months between scheduled oil changes and 30,000 miles between lubes. These are just two small parts of the comprehensive program which, in total, can significantly lower the cost of scheduled maintenance over 50,000 miles of driving.

**COLOR AND TRIM CODES.** Car colors and trims are coded, example: Antique Cream (62). Your Ford Dealer will be happy to show you color samples of paint and trim materials.

**OPTION AVAILABILITY.** Some features presented are optional at extra cost. Some options are required in combination with other options. Availability of some models and features described may be subject to a slight delay. Ask your Ford Dealer for the latest information on options, prices and availability.

**PRODUCT CHANGES.** Ford Division reserves the right to change specifications any time without incurring obligations.

**REPLACEMENT PARTS.** Be sure to specify genuine Ford-approved parts, Motorcraft parts and Autolite Spark Plugs from your Ford Dealer.

# FORD GRANADA

FORD DIVISION



Litho in U.S.A.