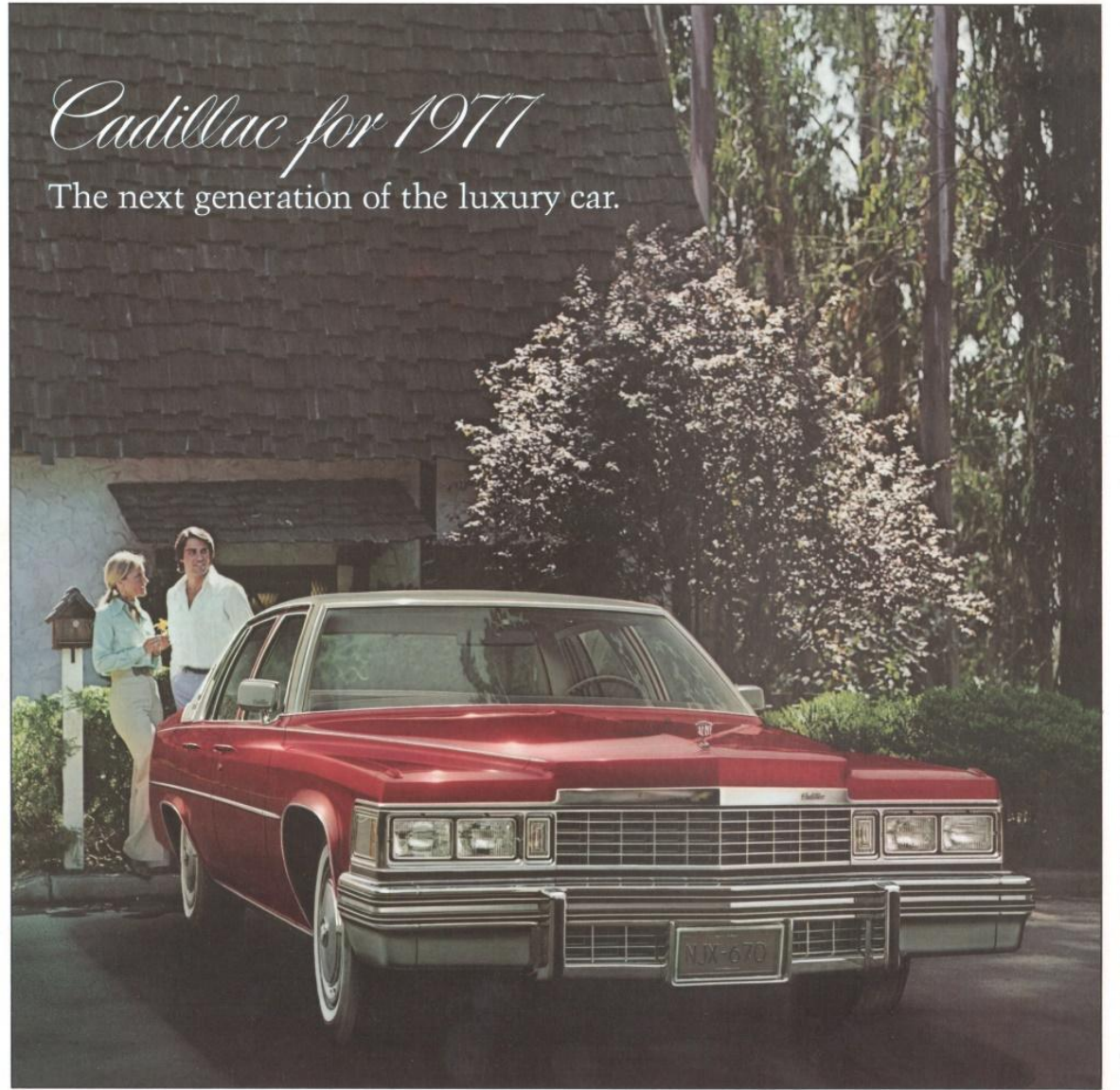


1977 *Cadillac*

FLEETWOOD BROUGHAM • COUPE DEVILLE • SEDAN DEVILLE
AND CADILLAC LIMOUSINES

Cadillac for 1977

The next generation of the luxury car.



WHAT WE DID.

The question is: How do you improve a car that consistently has the highest repeat ownership and the highest resale value of any U.S. luxury car make? How do you improve a Cadillac?

We engineered the car from the ground up, to make more efficient use of space. Using the world's foremost automotive technology, we literally created a new generation of the luxury car. New body. New chassis. New suspension system. New engine. It was a total effort that incorporated all requirements into one fully integrated design. The result: a luxury car designed and engineered for a changing world.

Room where it counts. There's more rear legroom and headroom in the DeVilles. The Fleetwood Brougham retains the legroom and headroom of its spacious 1976 counterpart. And there's the roomy, Cadillac-size trunk.

A superb ride... and more. Luxury takes on a new dimension in Cadillac 1977. We gave it great new lines. Clean. Crisp. Sculptured. We designed it to be more maneuverable than '76 models for easier parking. We built in extensive measures to help fight corrosion. We gave it a superb ride. In short, we built the next generation of the luxury car.

HOW WE DID IT.

Basically, we built on success. Retaining what you like about Cadillac—the comfort, luxury, security and roominess—and adding to it. By using many of the design concepts of Seville and by taking advantage of the most advanced automotive technology.

Advanced engineering. Again, the computer played an important role—performing in minutes what once required months. But probably nothing better illustrates the way Cadillac engineers built on success than the development of the new Cadillac 70 Litre (425 cu. in.) engine. All told, no less than 100 experimental engines were built and tested. From

this evolved the new engine that is standard on all 1977 Cadillacs except Seville.

WHAT IT MEANS TO YOU.

More maneuverability... for easier parking and a confident feel in city traffic. The turning circle for the 1977 Cadillac was decreased dramatically compared to 1976 models. It was reduced from 45.1 to 40.5 feet curb-to-curb on the DeVilles. Here is an agile luxury car. Quick to respond. With performance that could surprise you.

Even more comfort and convenience. It isn't easy to make a Cadillac more comfortable and convenient, but we think we have. There's a new instrument panel that organizes controls and information for you. More efficient use of space. Easy entry and exit with new door design that includes improved hold-open operation. Little things like two map lights instead of one.

And for 1977, a shoulder/seat belt combination you can conveniently draw across your lap any way you like.

Designed for serviceability. A major engineering objective was to make the 1977 Cadillacs easy to service. One example that shows how this was accomplished is the instrument panel. First is the integrated design of the main section itself. Its one-piece, foam-filled construction helps to reduce squeaks and rattles. Second is the front-mounted design of the



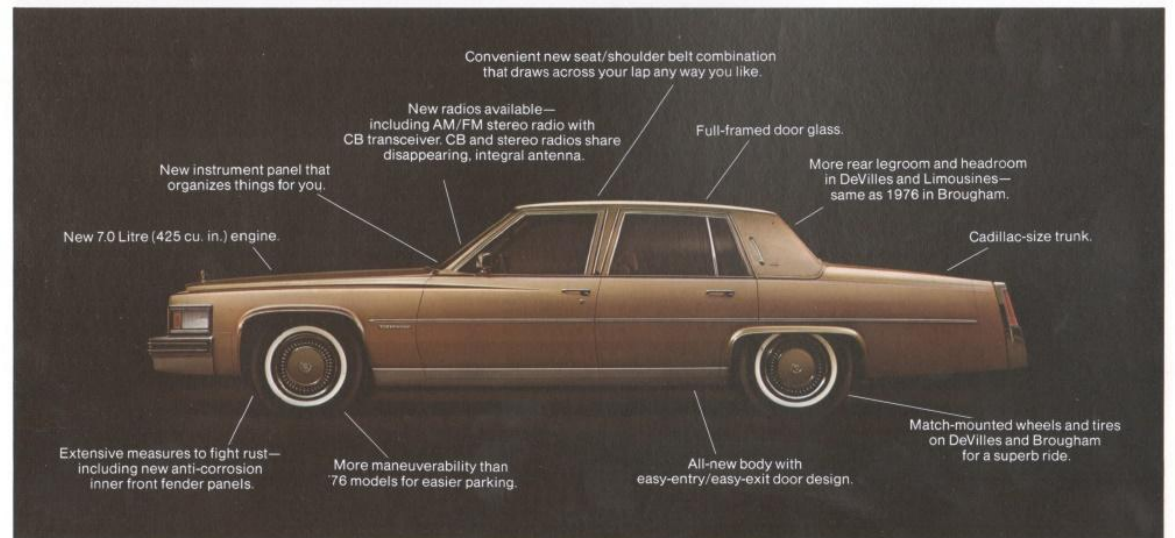
gauges and the radio. They can be pulled out quickly and easily from the front of the instrument panel, should service ever be required. Other examples include the use of positive-locking type electrical connectors in critical locations.

More protection for your investment. The 1977 Cadillacs are designed to battle rattles and rust. With new body construction engineered for structural integrity. Specially hardened friction plates to assure that strut-to-body joints stay tight on rough roads. Even ash trays ride on nylon tracks to reduce rattles. Extensive measures to fight corrosion include widespread use of Zincometal® and Bi-Metal (stainless steel on aluminum). New anti-corrosion inner front fender panels. And further elimination of water and dirt entrapment areas.

A ride you won't believe... until you take a test drive. Then you'll discover just how much Cadillac engineers' dedication to riding quality has paid off for 1977. You judge the results of the new Cadillac front suspension system, and all the other factors

that go into making the great Cadillac ride for '77. None is more significant, however, than that last, extra step Cadillac takes for all 1977 Fleetwood Broughams, Coupe DeVilles and Sedan DeVilles—match mounting of wheels and tires. The idea is quite simple, really. There is no such thing as a perfectly formed, perfectly round tire. Same goes for wheels. So what Cadillac does is use sensitive instrumentation to find the high point of radial force variation on the tire. That point is marked with a red dot. The same kind of test is made on the wheel—but this time the low point is indicated with a yellow dot. Then as the tire is mounted on the wheels, the dots are matched. Result: Reduced deflection and increased rolling smoothness.

A new expression of Total Cadillac Value. That is the value inherent in every 1977 Cadillac. When you buy it. When you drive it. And when you trade it. Total Cadillac Value is everything that helps make Cadillac 1977... an American Standard for the World.

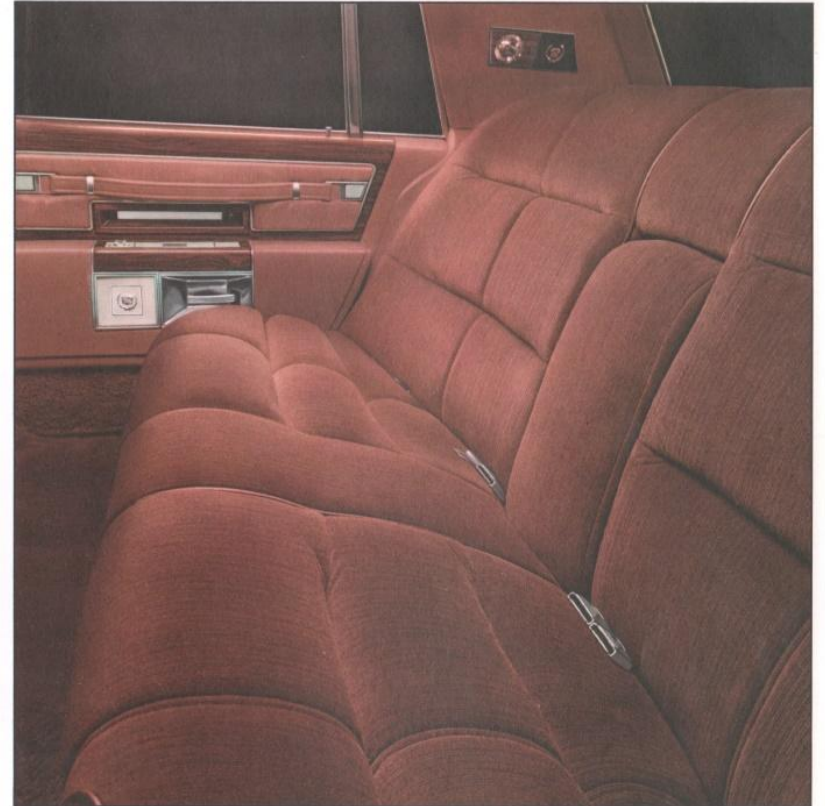




Fleetwood Brougham in Saffron with padded Light Saffron Metallic vinyl roof.



The Brougham has always been a car of elegant refinements . . . roomy luxury. A very special kind of Cadillac . . . for very special people. This year's all-new Brougham is built in that tradition. Start with Four-Wheel Disc Brakes . . . a new 7.0 Litre Engine . . . Automatic Level Control. Add to that Brougham's new clean, contemporary lines that highlight a distinctive roof treatment . . . luxurious appointments like a Tuxedo Grain Vinyl Roof . . . Carpeted Rear Footrests . . . beautiful Opera Lamps. Inside, you can enjoy the rich clarity of AM/FM Signal Seeking Stereo Radio with Scanner . . . Individual Reading Lamps. And one-piece carpeting from wall-to-wall.



Brougham interior luxury and comfort start with the understated elegance of an all-new Florentine velour fabric for 1977. Shown is Medium Saffron Florentine. It's also available in Light Gray, Dark Blue, Medium Sage Green, Light Yellow-Gold, Light Buckskin and Claret.

A new smooth-finish Dover fabric is available in Black, Dark Blue, Light Buckskin or Claret. You also may select from 11 available combinations with leather in the seating areas. Standard are 50/50 front seats with individual pull-

down armrests . . . six-way electric adjustment for driver and two-way manual adjustment for passenger. Like individuality? Then add to your Brougham's distinctiveness with an available Sunroof . . . Electronic-Fuel-Injected Engine . . . or AM/FM Stereo Radio with CB transceiver.

The Fleetwood Brougham



Coupe deVille in Naples Yellow with available Yellow Cabriolet vinyl roof.



It isn't easy to improve a Cadillac ... but as you can see in the sleek new lines of the 1977 Coupe deVille ... we did. Crisp. Clean. Sculpted. And sensible. The Coupe deVille is consistently a leader in both resale value and repeat ownership. What does it take to help make this America's favorite luxury car? You start with features like ... Automatic Climate Control ... Power Door Locks ... Stowaway Spare Tire for a Cadillac-size trunk ... a distinctive stand-up crest up front ... Six-Way Power Seat. For an even greater measure of luxury you can specify ... AM/FM Stereo Radio with CB transceiver. Astrorof. Power Trunk Lock. Wire Wheel Discs. Or Dual Comfort 50/50 Seats.



The excitement of owning a Coupe deVille is accentuated by the lively new interior fabrics and colors offered this year. Like the Light Yellow-Gold Aberdeen cloth shown, it's also available in Dark Blue, Medium Saffron and Claret.

For something more traditional, choose the handsome ribbed Dynasty cloth available in six colors including Claret. Or consider one of the 11 interiors which feature genuine leather

in the seating areas. Add to your Coupe deVille's distinctiveness by selecting such available features as ... a padded vinyl roof, accent striping, door edge guards or carpeted floor mats ... front and rear.

The Coupe de Ville



Sedan deVille in available Cerulean Blue Firemist with available White padded vinyl top.



The beauty of the 1977 Sedan deVille is obvious. But the interior roominess and comfort is something that must be experienced. Inside, it's been redesigned for more efficient use of space . . . more legroom and headroom in the rear. Sedan deVille is also an agile luxury car. With more maneuverability for easier parking. All in all, it adds up to family-size luxury, elegance and value. Especially when you consider such Cadillac features as . . . Automatic Climate Control, Power Door Locks, Power Windows, Match-Mounted Wheels and Tires, Six-Way Power Seat Adjuster, High Energy Ignition. All standard, of course. You can even add an AM/FM Stereo Radio with Digital Display.



Leather has an elegance and richness all its own. And when it's highlighting the seating areas of the 1977 Sedan deVille . . . it takes on an added dimension. Shown is available White leather with color-coordinated Dark Blue car-

peting. Other colors available are Black, Antique Light Blue, Antique Medium Sage Green, Antique Light Yellow-Gold, Antique Light Buckskin, Antique Medium Saffron, Red and Claret. Or,

if you prefer, select from ten shades of Dynasty and Aberdeen cloth that range from Black to Light Buckskin. For that final touch of luxury . . . add Tilt and Telescope Steering . . . Astrorof . . . Power Recliner Seats.

The Sedan deVille



Cadillac Fleetwood Limousine in Hudson Bay Blue with Black padded vinyl top.



This is the profile that will be seen in front of embassies, at airports, at important functions anywhere. The newly designed 1977 Fleetwood Limousine and Fleetwood Formal Limousine... the next generation of the Limousine. The new Flagships of the Cadillac fleet. They offer the interior roominess... the privacy... the elegance... the luxury... that you've come to expect from Cadillac. For example, there are large rear door openings for easy entrance and exit. To provide interior quiet, there is ample sound-absorbing material. The Automatic Climate Control System can be operated up front by the driver or from the passenger compartment. Plus the convenience of a Dual Accessory Control Panel... that allows passengers to operate power windows or set a desired temperature.



The 1977 Cadillac Limousine interiors... reflect so many things to so many different people. To your business associates... a supreme compliment. To your corporate officers... an exclusive boardroom where business can be conducted privately. And to everyone, a place of luxury and comfort. As evidenced by this interior

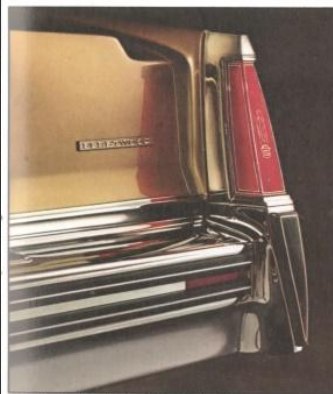
... in Dark Blue Florentine velour. An elegant Light Gray or Black Dover cloth is also offered. On the Fleetwood Formal Limousine a front seat with black leather in the seating areas is standard... as well as a glass partition that separates driver and passengers... for even greater privacy. But Cadillac doesn't forget why you

buy a Limousine. There is spacious seating... AM/FM Radio with Power Antenna... Automatic Level Control... Left- and Right-Side Remote Control Mirrors... two folding seats for passengers... vinyl roof... accent striping... beautiful Opera Lamps... plus wheel covers to match any color Limousine you choose.

The Cadillac Limousines



New instrument panel.



Dual rub strip for bumper protection.



New steering wheel.



Dramatic new styling.



Cadillac-size trunk.



Push-to-reset trip odometer.



AM/FM Signal-Seeking Stereo Radio with Scanner.



Cornering Lights and Lamp Monitors.



Styling accents for Fleetwood Brougham.



Steel-belted, wide-whitewall radial tires.

Standard Features

New Instrument Panel—Organizes information and controls for you. Driver-only controls on the left . . . information hand across the top . . . and the center control area for shared controls such as Automatic Climate Control and radio.

Automatic Climate Control—Heating/cooling/dehumidifying system maintains the temperature you select. The system has been redesigned so the compressor operates only when necessary.

Steel-Belted, Wide-Whitewall Radial Tires—Built to GM specifications.

Variable Ratio Power Steering—Easy parking and cornering, while retaining a feel of the road. (Fixed Ratio on Limousines.)

Cornering Lights—Project light from the side of the car when turning.

Disc Brakes—Four-wheel disc brakes are now standard on Fleetwood Brougham. Self-adjusting disc-drum brakes on DeVilles and Limousines. All use dual master cylinder system.

Lamp Monitors—Show if major or secondary outside light systems are functioning.

Automatic Level Control—Automatically adjusts to

changing loads to help keep car level. Standard on Brougham and Limousines, available on DeVilles.

Axle Ratios—For varying driving conditions.

Power Door Locks and Power Windows—Can be operated individually or with master controls.

AM/FM Radio with Automatic Power Antenna—Standard on DeVilles and Limousines. If desired, power antenna can be left at a preselected height without retracting.

AM/FM Signal-Seeking Stereo Radio with Scanner and Power Antenna—Standard on Brougham, available on DeVilles and Limousines. When Scan button is pushed, radio continuously scans across dial, sampling each station for about six seconds. Pushing button a second time locks in desired station.

Six-Way Power Seat Adjuster on Driver Side—Adjusts front seat forward, back, up, down and tilts forward or back. Standard on Fleetwood Brougham and DeVilles, available on Fleetwood Limousine only.

Dual Comfort Seats—50/50 standard on Fleetwood Brougham, available on DeVilles. They allow separate adjustment for driver and front passenger. Available for the passenger's side is a power reclining seat with a six-

way power adjuster. A new power recliner is available (except Limousines) for the driver's side. 45/45 front compartment seats standard on Fleetwood Formal Limousine only.

Accent Striping—Standard on Limousines, available on DeVilles and Fleetwood Brougham.

High Energy Ignition System—Eliminates points, ignition condenser, cam and rubbing block.

Soft Ray Glass—All models.

Three-Speed Wipers and Washers—"Mist" position for single-wipe action.

Opera Lamps—Standard on Fleetwood Brougham and Limousines, available on DeVilles.

Freedom™ Battery—Never needs water.

Cadillac-Size Trunk—With standard Stowaway Spare Tire (not on Limousines).

As well as . . .

- Push-to-Reset Trip Odometer
- Quartz Digital Clock
- Color-Keyed Litter Container
- Inside Hood Release
- Automatic Parking Brake Release
- Remote Control Left-Side Mirror (Also remote control right-side mirror on Limousines)
- Washer Fluid Indicator Light
- Center Armrests
- Visor Vanity Mirror
- Turbo Hydra-Matic Transmission

Safety Features

Occupant Protection

- Seat belts with pushbutton buckles for all passenger positions
- Two front combination seat and inertia reel shoulder belts for driver (with reminder light and buzzer) and right front passenger
- Energy-absorbing steering column
- Passenger guard door locks
- Safety door latches and hinges
- Folding seatback latches
- Energy-absorbing padded instrument panel and front seatback tops
- Contoured windshield header
- Thick laminate windshield
- Safety armrests
- Safety steering wheel
- Glove box door latch impact security
- Smooth contoured door handles
- Low-profile coat hooks
- Automatic locking rear outboard seat belt retractors
- Shoulder belt anchorages for rear seat

onboard occupants

- Pressure-lock radiator cap
- High-strength front seat anchorages and construction
- High-strength rear seat retention
- Stamped steel door hinges
- Accident Prevention
 - Side marker lights and reflectors
 - Parking lamps that illuminate with headlamps
 - Four-way hazard warning flasher
 - Backup lights
 - Lane change feature in direction signal control
 - Windshield defrosters, washer and three-speed wipers
 - Wide-view inside mirror (vinyl-edged, shatter-resistant glass and deflecting support)
 - Outside rearview mirror
 - Dual master cylinder brake system with warning light

Starter Safety Switch

- Dual action safety hood latch
- Headlamp-aiming access provision
- Low-glare instrument panel top, inside windshield moldings, wiper arms and blades and steering wheel metallic surfaces
- Safety wheel rims
- Uniform shift quadrant
- No-winged wheel nuts, discs and caps
- Disc brakes with audible wear indicators
- Self-adjusting brakes
- Illumination of windshield wiper and washer, heater, air conditioner and defroster controls
- Pressure-relief gas cap
- **Anti-Theft**
 - Anti-theft ignition key reminder buzzer
 - Anti-theft steering column lock
 - Anti-theft key system (one key for ignition only, other key for glove compartment, doors and trunk)
 - Visible vehicle identification

For your added pleasure...

Express your individuality... by selecting from the many Cadillac features available this year.



AstrorooF.



Wire Wheel Discs.



Cruise Control.



Power Recliner Seat.



On-Board Computer for EFI.

Electronic-Fuel-Injected Engine—It is designed to offer quick response, fast starting, smooth engine idle and few scheduled maintenance operations. Not available on Limousines.

AstrorooF—Laminated and tinted safety-glass panel lets the sunshine in even when closed. Adjustable sunshade. (Except Limousines.)

Sunroof—Like AstrorooF, except the electrically-powered panel is not translucent. (Except Limousines.)

Vinyl Roof—13 available colors in Tuxedo Grain. Standard on Brougham and Limousines.

Automatic Door Lock System—Locks all doors automatically when the shift lever is moved to a forward drive position.

Theft-Deterrent System—Sounds horn and flashes exterior lights when security is violated.

Illuminated Entry System—Pushing front door handle button illuminates door lock cylinders and turns on inside courtesy lights.

Illuminated Vanity Mirror—Visor mirror on the passenger side illuminates when cover is raised.

Fuel Monitor System—Color-coded lights on the instrument panel indicate when fuel consumption rate is efficient or inefficient—and when the fuel supply is low.

Dual Comfort 50/50 Front Seats—Standard on Brougham. Available on DeVilles only.

Power Recliner Passenger Seat—Including six-way power seat adjuster, available on all 50/50 Dual Comfort front seats.

Power Recliner Driver Seat—Available on all Dual

Comfort 50/50 front seats.

Power Recliner—For passenger seatback on notchback coupe type seats. Available on Coupe DeVille and on Sedan DeVille with leather for the seating areas.

Opera Lamps—Available on DeVilles, standard on Fleetwood Brougham and Limousines.

Wire Wheel Discs or Turbine-Vaned Wheel Discs—Both have handsome brushed chrome area with ornamentation.

Cruise Control—New electronic Cruise Control includes both "Resume" and "Advance" features, offering increased flexibility for speed selection and alteration.

Rear Window Defogger—Electric grid type.

Twilight Sentinel—Automatically turns driving lights on and off in response to outside light conditions. (Also turns lights off after an adjustable time delay.)

Guide-Matic Headlamp Control—At night, automatically dims lights with approach of oncoming cars... and then returns lights to bright.

Controlled-Cycle Wipers—Delay feature adjusts wiping action for light rain or other conditions. Includes new momentary "mist" position.

Trailer Package—Heavy-duty equipment grouping for towing up to 6000 lbs. (Except Limousines.)

Controlled Differential—Directs power to the rear wheel having better traction.

Automatic Level Control—Automatically adjusts car to changing loads. Standard on Fleetwood

Brougham and Limousines, available on DeVilles.

Remote Control Trunk Lock Release—With ignition on, light touch of trunk lock button located inside glove box... causes trunk to open. Includes power pull-down feature.

Tilt and Telescope Steering Wheel—Swings up for easy entry/exit. Also slides and adjusts in or out.

Interiors with Leather in Seating Areas—11 trim combinations available. (Except Limousines.)

Remote Control Right-Side Mirror—Standard on Limousines.

Illuminated Outside Thermometer—On base of left-side mirror.

Firemist Paints—These paints offer rich color, deep luster and high gloss. Six colors to select from.

Carpeted Rubber Floor Mats—Available for front and rear.

Accent Striping—Standard on Limousines.

Door Edge Guards

License Plate Mounting Provision—No-charge feature.

Front & Rear License Frames

Trumpet Horn

80-Amp Generator—Standard on Limousines.

(Included when Electronic-Fuel-Injected Engine is ordered.)

Performance Axle—No-charge feature on DeVilles and Fleetwood Brougham. Not available on Limousines.

Trunk Mat

Power Seat Adjuster—Six-way. Fleetwood Limousine only. Standard on DeVilles and Brougham.

Radios Available

This is the most outstanding selection of Cadillac sound equipment ever offered. Whatever you want in top-quality, high-performance listening... Cadillac offers it to you this year.

AM/FM Stereo Radio with Tape Player—This unit with integral 8-track tape player has exceptional sound fidelity. The four diagonally-opposed speakers literally surround listeners with sound.

AM/FM Stereo Radio with Signal-Seeker and Scanner—This four-speaker system offers rich stereo reception. When the Scan button is pushed... the radio continuously scans across the dial... sampling each station in turn for about six seconds. When a desired station is heard, you push the Scan button a second time. And the station is "locked" in. Standard on Fleetwood Brougham.

AM/FM Stereo Pushbutton Radio with Digital Display—This unit features an electronic display for the radio station frequency and in addition, provides time of day, date and elapsed-time readouts. Momentary actuation of the appropriate pushbutton switches will automatically recall each function for about a five- to seven-second interval. When the radio is manually or pushbutton tuned, the radio station frequency is displayed automatically for the time delay interval. Then unit reverts to displaying time.



AM/FM Stereo Pushbutton Radio with Digital Display.

AM/FM Pushbutton Stereo Radio with Citizens Band—

This exciting new radio is available for the first time for Cadillac. It has integral citizens band transceiver controls. The CB module is installed conveniently out of sight in the instrument panel area. Panel controls for CB include Squelch, Channel Selector Switch, Channel Number Indicator and Radio/CB Selection Switch. The Citizens Band uses the same speaker system as is used for the stereo radio, which results in clarity of received signals. An Override feature is included. So you may listen to your favorite radio program... and still pick up a strong Citizens Band signal which will "override" the program you're listening to.



AM/FM Pushbutton Stereo Radio with Citizens Band.

Special Editions

Brougham d'Elegance. A new expression of luxury and elegance... the Brougham d'Elegance. It starts with special, contoured pillow-style seats trimmed in rich Florentine velour cloth. Available in Light Gray, Dark Blue, Light Buckskin and Claret. Add to this the luxury of... 50/50 Dual Comfort front seats... plush, high pile carpeting for floor and doors... vinyl-backed deluxe front and rear floor mats covered in the same fine carpeting material. The handsome upper door pads and

Brougham d'Elegance

the inserts in the door pull straps and the front seatback assist straps are Florentine cloth. To top off the Brougham's interior elegance... there are three roof-mounted assist straps. And outside? There are turbine-vaned wheel discs. "d'Elegance" script on the sail panel plus distinctive accent striping. Incidentally, a power recliner is available for the driver side in addition to an available power recliner and six-way power seat adjuster for the passenger seat.

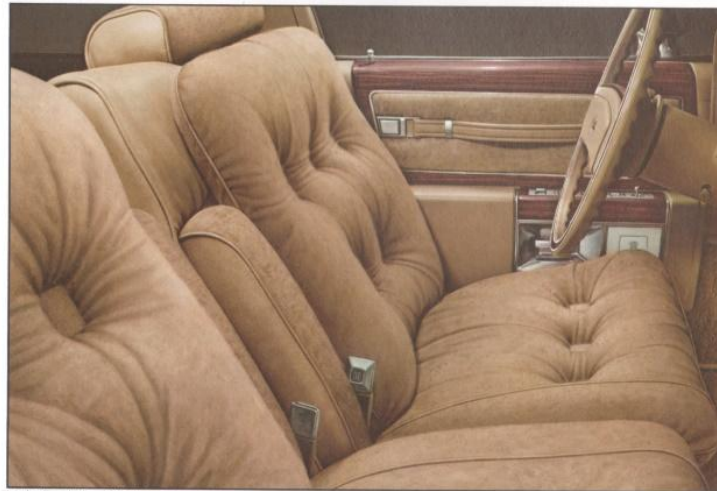
DeVille d'Elegance. Here's an edition that is very special. Gracing the luxurious pillow-style seats... a stunning crushed velour cloth—

Medici—that is available in Claret, Medium Saffron, Dark Blue and Light Buckskin. In addition to the seats... the upper door pads, inserts in the door pull straps and front seatback assist straps are Medici cloth. To round out this edition you will find... high pile carpeting for floors and doors... accent striping... body side moldings with vinyl inserts that match the exterior car color... and 50/50 Dual Comfort front seats. Plus other luxury features.

Cabriolet. A distinctive look for Coupe DeVille buyers. This handsome Cabriolet roof treatment is available in 13 coordinated colors. You may order it with or without the available AstrorooF or Sunroof. Also featured is a decorative exterior Cadillac crest on the sail panel... and bright roof moldings.



Cabriolet roof on Coupe DeVille.



Light Buckskin Medici cloth in DeVille d'Elegance.

Specifications

Fleetwood Brougham • Coupe deVille • Sedan deVille
and Cadillac Limousines

Specifications

Engine

8-Cylinder, 90° V-Type
Bore 103.68 mm (4.082")
Stroke 103.12 mm (4.060")
Displacement 7.0 litres (425 cu. in.)
Compression Ratio 8.2 to 1
Firing Order 1-5-6-3-4-2-7-8
Mounts 3 points, rubber insulated
Emission Controls Positive Crankcase
Ventilation, Air Injection Reactor,
Exhaust Gas Recirculation, Early
Fuel Evaporation, Evaporative
Control, Oxidizing Converter

Note: Air Injector Reactor System and Exhaust Pressure
Transducer for EGR utilized on California and EFI cars
only.

Fuel System

Carburetion System 4 BBL "Quadrajel"
Fuel Filter Carburetor Inlet
Pump Mechanical

Note: The 1977 Cadillac engine is designed to operate
only on unleaded gasoline of 91 Research Octane. The
gasoline should also have at least a Motor Octane of
83. Unleaded gasoline is essential for proper emission
control system operation, and it will reduce spark plug
fouling. The use of leaded gasoline can severely min-
imize the effectiveness of the emission control system
and result in the loss of warranty coverage.

Fuel Injection System—Available

Type Speed-density, port injection
Delivery Time, 2-phase, 4 cyl. each phase
Filter In-line, 20 micron
Pumps 2 electric (in-line, in-tank)

Fuel Tank

Capacity 90.8 litres (24 gallons approx.)
Emission Controls (For Vapor Control) Fuel Tank
vented through charcoal canister

Electrical

Battery—Delco Remo 87-5 12-volt, negative
ground, 3500-watt, 66 plates,
side terminals. No filler/vent caps
Generator 63 amp, 80 amp on
Limousines, EFI Models &
Trailerling Packages
Voltage Regulator Solid state, integral
with generator
Ignition HEI with 8-mm silicone
insulated wiring

Transmission

All models "400 Series," 3-speed
Turbo Hydra-Matic

Propeller (Drive) Shaft

Front and rear constant
velocity joints. Limousines
have additional center
constant velocity joint

Rear Axle Differential

..... Hypoid Type
Ratios—Standard Federal (Carb. & Available EFI)
2.28:1 except Limousines
—Standard Calif. (Available EFI) 2.73:1 except
Limousines
—Standard Calif. (Carb.) & Federal Altitude
(Carb. & Available EFI) 3.08:1 except
Limousines
—Standard Federal (Carb.), Calif. (Carb.) &
Federal Altitude (Carb.) 3.08:1 Limousines
only
—Available 3.08:1 except Calif. & Federal
(Available EFI)

Available Controlled Differential Clutch Type

Front Suspension Independent Coil
Springs Coil
Stabilizer Bar Link Type
Shock Absorbers Hydraulic Direct Action

Rear Suspension Four-link drive—coil spring
Springs Coil
Shock Absorbers Hydraulic Direct Action
Height Control Automatic Level Control
(except DeVilles)

Brakes—DeVilles & Limousines Disc—drum

Master Cylinder self-adjusting
Power Boosters Tandem vacuum
Front Ventilated discs
Caliper Single piston sliding
Rear Duo servo drums
Drums 270 mm (11") lined cast iron—DeVilles
305 mm (12") lined cast iron—Limousines

Lining Material (Front & Rear) Molded asbestos
Swept Area
(Total) 2418.5 cm² (375.0 in.²)—DeVilles
2743.2 cm² (425.3 in.²)—Limousines

Parking Brake Silent action with vacuum release
Action Mechanical on rear brakes
Telltale Light Indicates hydraulic malfunction
or parking brake applied
Linings Audible wear indicators

Brakes—Brougham Disc—self-adjusting
Master Cylinder Dual hydraulic
Power Booster Tandem vacuum
Front & Rear Single piston sliding
calipers, ventilated discs

Swept Area (Total) 3057.6 cm² (474 in.²)
Lining Material (Front & Rear) Molded asbestos
Parking Brake Silent action with vacuum release
Action Mechanical on rear caliper
Telltale Light Indicates hydraulic malfunction
or parking brake applied
Linings Audible wear indicators

Steering Variable Ratio Power
(Constant ratio on Limousine)
Damper—Except DeVilles Hydraulic shock absorber

Overall Ratios

DeVilles, Brougham 17:1-15:1
Limousines 20.0-20.6:1

Steering Knuckle Integral knuckle, arm and
caliper support; integral
hubs and rotors on spindles

Bearings Tapered roller
Spherical (Ball) Joints Wear indicator on
lower joints

Frame Ladder type frame
welded crossmembers

Wheels & Tires

Tires GM Specification Steel-Belted Radial
Sidewall Wide white stripe
Size—DeVilles GR 78-15-B
Brougham HR 78-15-B
Limousines HR 78-15-D
Wheels—Except Limousines 15 x 6 JJ
Limousines 15 x 6 JJ Heavy-duty

Headlamps 4 rectangular

Cornering Lamps Integral with side marker lamps

Lamp Monitors Standard front and rear

Overall Size
Tread Width 1568 mm Front (61.7")
1542 mm Rear (60.7")

Wheelbase

DeVilles 3085 mm (121.5")
Fleetwood Brougham 3085 mm (121.5")
Limousines 3670 mm (144.5")

Overall Length

DeVilles 5618 mm (221.2")
Fleetwood Brougham 5618 mm (221.2")
Limousines 6203 mm (244.2")

Overall Height

Fleetwood Brougham 1441 mm (56.7")
Sedan deVille 1404 mm (55.3")
Coupe deVille 1381 mm (54.4")
Fleetwood Limousine 1446 mm (56.9")
Formal Limousine 1446 mm (56.9")

Shipping Weight

Fleetwood Brougham 1969 kg (4340 lbs.)
Coupe deVille 1899 kg (4186 lbs.)
Sedan deVille 1915 kg (4222 lbs.)
Fleetwood Limousine 2149 kg (4738 lbs.)
Formal Limousine 2180 kg (4806 lbs.)

Cadillac Motor Car Division of General Motors
Corporation reserves the right to make changes
at any time, without notice, in prices, colors,
materials, equipment, specifications and mod-
els and also to discontinue models. On some
of the cars shown and described in this catalog
are features and accessories available at extra
cost, but well worth it for the added driving
comfort and convenience they provide.



Litho in U.S.A.